

Product datasheet for **TA312075**

SHC (SHC1) Rabbit Polyclonal Antibody

Product data:

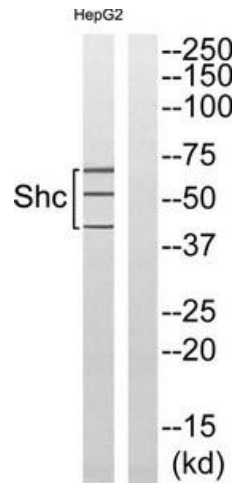
Product Type:	Primary Antibodies
Applications:	IHC, WB
Recommended Dilution:	WB: 1:500~1000, IHC: 1:50~100, IF: 1:100~1:500, ELISA: 1:20000
Reactivity:	Human, Mouse, Rat
Host:	Rabbit
Isotype:	IgG
Clonality:	Polyclonal
Immunogen:	The antiserum was produced against synthesized non-phosphopeptide derived from human Shc around the phosphorylation site of tyrosine 349 (H-Q-YP-Y-N).
Formulation:	Phosphate buffered saline (without Mg ²⁺ and Ca ²⁺), pH 7.4, 150mM NaCl, 0.02% sodium azide and 50% glycerol.
Concentration:	lot specific
Purification:	The antibody was affinity-purified from rabbit antiserum by affinity-chromatography using epitope-specific immunogen.
Conjugation:	Unconjugated
Storage:	Store at -20°C as received.
Stability:	Stable for 12 months from date of receipt.
Gene Name:	SHC adaptor protein 1
Database Link:	NP_003020 Entrez Gene 20416 Mouse Entrez Gene 85385 Rat Entrez Gene 6464 Human P29353
Synonyms:	SHC; SHCA
Note:	Shc (Ab-349) antibody detects endogenous levels of total Shc protein.
Protein Families:	Druggable Genome



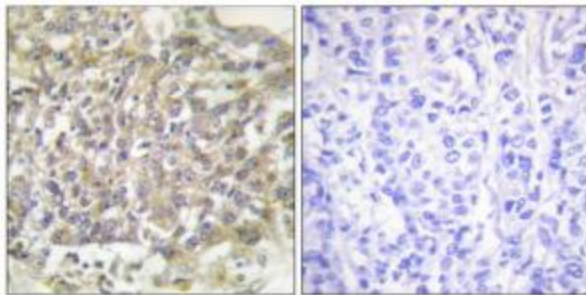
[View online »](#)

Protein Pathways:

Adherens junction, Arrhythmogenic right ventricular cardiomyopathy (ARVC), Chemokine signaling pathway, Chronic myeloid leukemia, Dilated cardiomyopathy, ErbB signaling pathway, Focal adhesion, Glioma, Hypertrophic cardiomyopathy (HCM), Insulin signaling pathway, Leukocyte transendothelial migration, Natural killer cell mediated cytotoxicity, Neurotrophin signaling pathway, Pathogenic Escherichia coli infection, Regulation of actin cytoskeleton, Tight junction, Vibrio cholerae infection, Viral myocarditis

Product images:


Western blot analysis of extracts from HepG2 cells treated with Calyculin A (50nM, 15min), using Shc (Ab-349) antibody. The lane on the right is treated with the synthesized peptide.



Immunohistochemical analysis of paraffin-embedded human breast carcinoma tissue using Shc (Ab-349) antibody. The picture on the right is treated with the synthesized peptide.