

Product datasheet for **TA312061**

PSMD3 Rabbit Polyclonal Antibody

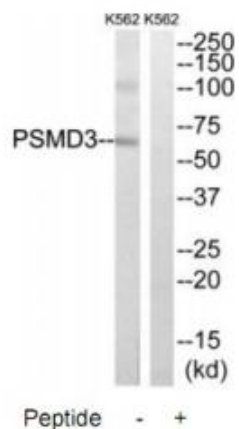
Product data:

Product Type:	Primary Antibodies
Applications:	IHC, WB
Recommended Dilution:	WB: 1:500~1:3000, IHC: 1:50~1:100, ELISA: 1:40000
Reactivity:	Mouse, Human, Rat
Host:	Rabbit
Isotype:	IgG
Clonality:	Polyclonal
Immunogen:	The antiserum was produced against synthesized peptide derived from internal of human PSMD3.
Formulation:	Phosphate buffered saline (without Mg ²⁺ and Ca ²⁺), pH 7.4, 150mM NaCl, 0.02% sodium azide and 50% glycerol.
Concentration:	lot specific
Purification:	The antibody was affinity-purified from rabbit antiserum by affinity-chromatography using epitope-specific immunogen.
Conjugation:	Unconjugated
Storage:	Store at -20°C as received.
Stability:	Stable for 12 months from date of receipt.
Gene Name:	proteasome 26S subunit, non-ATPase 3
Database Link:	NP_002800 Entrez Gene 22123 Mouse Entrez Gene 287670 Rat Entrez Gene 5709 Human O43242
Synonyms:	P58; RPN3; S3; TSTA2
Note:	PSMD3 antibody detects endogenous levels of total PSMD3 protein.
Protein Pathways:	Proteasome

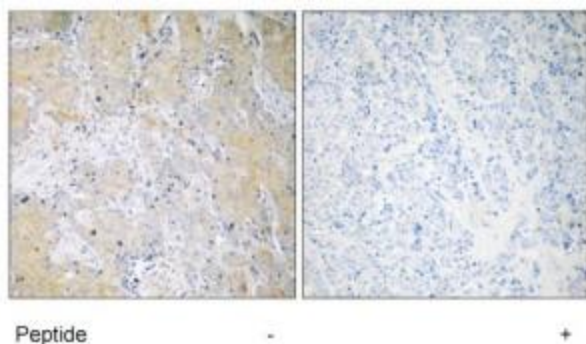


[View online »](#)

Product images:



Western blot analysis of extracts from K562 cells, using PSMD3 antibody. The lane on the right is treated with the synthesized peptide.



Immunohistochemistry analysis of paraffin-embedded human breast carcinoma tissue using PSMD3 antibody. The picture on the right is treated with the synthesized peptide.