

## Product datasheet for **TA312051**

### MEK6 (MAP2K6) Rabbit Polyclonal Antibody

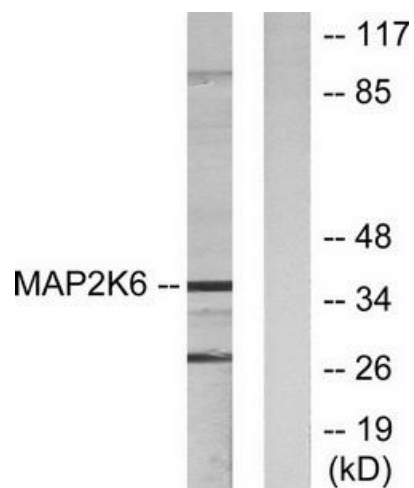
#### Product data:

Product Type:	Primary Antibodies
Applications:	WB
Recommended Dilution:	WB: 1:500~1:3000, ELISA: 1:10000
Reactivity:	Human, Mouse, Rat
Host:	Rabbit
Isotype:	IgG
Clonality:	Polyclonal
Immunogen:	The antiserum was produced against synthesized peptide derived from N-terminal of human MAP2K6.
Formulation:	Phosphate buffered saline (without Mg <sup>2+</sup> and Ca <sup>2+</sup> ), pH 7.4, 150mM NaCl, 0.02% sodium azide and 50% glycerol.
Concentration:	lot specific
Purification:	The antibody was affinity-purified from rabbit antiserum by affinity-chromatography using epitope-specific immunogen.
Conjugation:	Unconjugated
Storage:	Store at -20°C as received.
Stability:	Stable for 12 months from date of receipt.
Gene Name:	mitogen-activated protein kinase kinase 6
Database Link:	<a href="#">NP_002749</a> <a href="#">Entrez Gene 26399 MouseEntrez Gene 114495 RatEntrez Gene 5608 Human P52564</a>
Synonyms:	MAPKK6; MEK6; MKK6; PRKMK6; SAPKK-3; SAPKK3
Note:	MAP2K6 antibody detects endogenous levels of total MAP2K6 protein.
Protein Families:	Druggable Genome, Protein Kinase
Protein Pathways:	Amyotrophic lateral sclerosis (ALS), Fc epsilon RI signaling pathway, GnRH signaling pathway, MAPK signaling pathway, Toll-like receptor signaling pathway



[View online »](#)

## Product images:



Western blot analysis of extracts from 293 cells, using MAP2K6 antibody. The lane on the right is treated with the synthesized peptide.