

Product datasheet for **TA312050**

MEK6 (MAP2K6) Rabbit Polyclonal Antibody

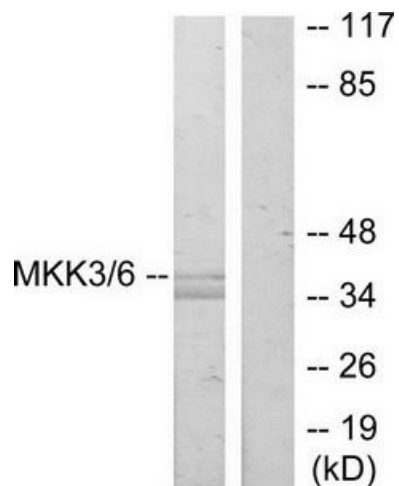
Product data:

Product Type:	Primary Antibodies
Applications:	IHC, WB
Recommended Dilution:	WB: 1:500~1:3000, IHC: 1:50~1:100, ELISA: 1:5000
Reactivity:	Human, Rat
Host:	Rabbit
Isotype:	IgG
Clonality:	Polyclonal
Immunogen:	The antiserum was produced against synthesized non-phosphopeptide derived from human MKK6 around the phosphorylation site of Serine207.
Formulation:	Phosphate buffered saline (without Mg ²⁺ and Ca ²⁺), pH 7.4, 150mM NaCl, 0.02% sodium azide and 50% glycerol.
Concentration:	lot specific
Purification:	The antibody was affinity-purified from rabbit antiserum by affinity-chromatography using epitope-specific immunogen.
Conjugation:	Unconjugated
Storage:	Store at -20°C as received.
Stability:	Stable for 12 months from date of receipt.
Gene Name:	mitogen-activated protein kinase kinase 6
Database Link:	NP_002749 Entrez Gene 114495 Rat Entrez Gene 5608 Human P52564
Synonyms:	MAPKK6; MEK6; MKK6; PRKMK6; SAPKK-3; SAPKK3
Note:	MKK3 (Ab-189) Antibody detects endogenous levels of total MKK6 protein.
Protein Families:	Druggable Genome, Protein Kinase
Protein Pathways:	Amyotrophic lateral sclerosis (ALS), Fc epsilon RI signaling pathway, GnRH signaling pathway, MAPK signaling pathway, Toll-like receptor signaling pathway

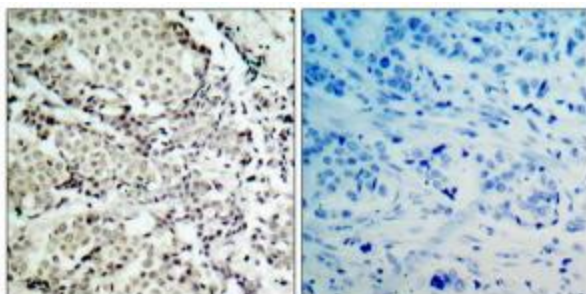


[View online »](#)

Product images:



Western blot analysis of extracts from MDA-MB-435 cells, using MKK3 (Ab-189) Antibody. The lane on the right is treated with the synthesized peptide.



Immunohistochemistry analysis of paraffin-embedded human breast carcinoma tissue, using MKK3 (Ab-189) Antibody. The picture on the right is treated with the synthesized peptide.