

Product datasheet for **TA312049**

MAPK6 Rabbit Polyclonal Antibody

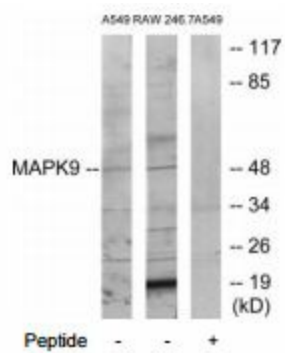
Product data:

Product Type:	Primary Antibodies
Applications:	WB
Recommended Dilution:	WB: 1:500~1:3000, ELISA: 1:10000
Reactivity:	Human, Mouse, Rat
Host:	Rabbit
Isotype:	IgG
Clonality:	Polyclonal
Immunogen:	The antiserum was produced against synthesized peptide derived from internal of human MAPK9.
Formulation:	Phosphate buffered saline (without Mg ²⁺ and Ca ²⁺), pH 7.4, 150mM NaCl, 0.02% sodium azide and 50% glycerol.
Concentration:	lot specific
Purification:	The antibody was affinity-purified from rabbit antiserum by affinity-chromatography using epitope-specific immunogen.
Conjugation:	Unconjugated
Storage:	Store at -20°C as received.
Stability:	Stable for 12 months from date of receipt.
Gene Name:	mitogen-activated protein kinase 6
Database Link:	NP_002739 Entrez Gene 50772 Mouse Entrez Gene 58840 Rat Entrez Gene 5597 Human Q16659
Synonyms:	ERK3; HsT17250; p97MAPK; PRKM6
Note:	MAPK9 antibody detects endogenous levels of total MAPK9 protein.
Protein Families:	Druggable Genome, ES Cell Differentiation/IPS, Protein Kinase



[View online »](#)

Product images:



Western blot analysis of extracts from A549 cells and RAW264.7 cells, using MAPK9 antibody. The lane on the right is treated with the synthesized peptide.