

## Product datasheet for **TA312048**

### MAPK6 Rabbit Polyclonal Antibody

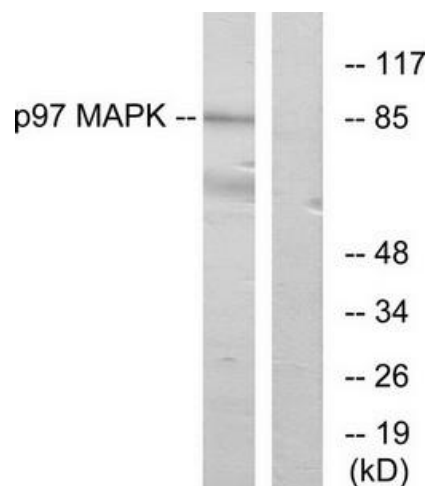
#### Product data:

Product Type:	Primary Antibodies
Applications:	IF, WB
Recommended Dilution:	WB: 1:500~1:3000, IF: 1:100~1:500, ELISA: 1:5000
Reactivity:	Human, Mouse, Rat
Host:	Rabbit
Isotype:	IgG
Clonality:	Polyclonal
Immunogen:	The antiserum was produced against synthesized peptide derived from internal of human p97 MAPK.
Formulation:	Phosphate buffered saline (without Mg <sup>2+</sup> and Ca <sup>2+</sup> ), pH 7.4, 150mM NaCl, 0.02% sodium azide and 50% glycerol.
Concentration:	lot specific
Purification:	The antibody was affinity-purified from rabbit antiserum by affinity-chromatography using epitope-specific immunogen.
Conjugation:	Unconjugated
Storage:	Store at -20°C as received.
Stability:	Stable for 12 months from date of receipt.
Gene Name:	mitogen-activated protein kinase 6
Database Link:	<a href="#">NP_002739</a> <a href="#">Entrez Gene 50772 Mouse</a> <a href="#">Entrez Gene 58840 Rat</a> <a href="#">Entrez Gene 5597 Human</a> <a href="#">Q16659</a>
Synonyms:	ERK3; HsT17250; p97MAPK; PRKM6
Note:	p97 MAPK antibody detects endogenous levels of total p97 MAPK protein.
Protein Families:	Druggable Genome, ES Cell Differentiation/IPS, Protein Kinase

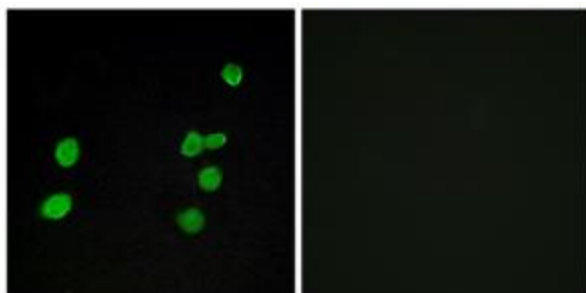


[View online »](#)

## Product images:



Western blot analysis of extracts from K562 cells, using p97 MAPK antibody. The lane on the right is treated with the synthesized peptide.



Immunofluorescence analysis of MCF-7 cells, using p97 MAPK antibody. The picture on the right is treated with the synthesized peptide.