

Product datasheet for **TA312044**

PKC zeta (PRKCZ) Rabbit Polyclonal Antibody

Product data:

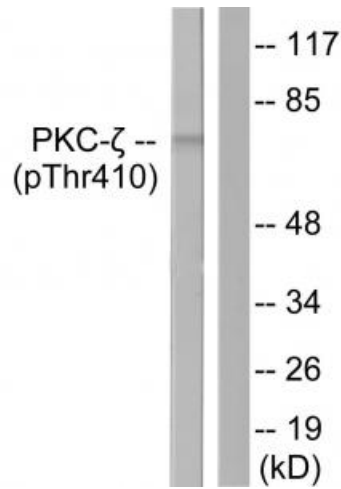
Product Type:	Primary Antibodies
Applications:	IF, IHC, WB
Recommended Dilution:	WB: 1:500~3000, IHC: 1:50~100, IF: 1:100~1:500, ELISA: 1:20000
Reactivity:	Human, Mouse, Rat
Modifications:	Phospho-specific
Host:	Rabbit
Isotype:	IgG
Clonality:	Polyclonal
Immunogen:	The antiserum was produced against synthesized phosphopeptide derived from human PKC? around the phosphorylation site of threonine 410 (T-S-TP-F-C).
Formulation:	Phosphate buffered saline (without Mg ²⁺ and Ca ²⁺), pH 7.4, 150mM NaCl, 0.02% sodium azide and 50% glycerol.
Concentration:	lot specific
Purification:	The antibody was affinity-purified from rabbit antiserum by affinity-chromatography using epitope-specific immunogen.
Conjugation:	Unconjugated
Storage:	Store at -20°C as received.
Stability:	Stable for 12 months from date of receipt.
Gene Name:	protein kinase C zeta
Database Link:	NP_002735 Entrez Gene 18762 Mouse Entrez Gene 25522 Rat Entrez Gene 5590 Human Q05513
Synonyms:	PKC-ZETA; PKC2
Note:	PKC. (phospho-Thr410) antibody detects endogenous levels of PKC. only when phosphorylated at threonine 410.
Protein Families:	Druggable Genome, Protein Kinase



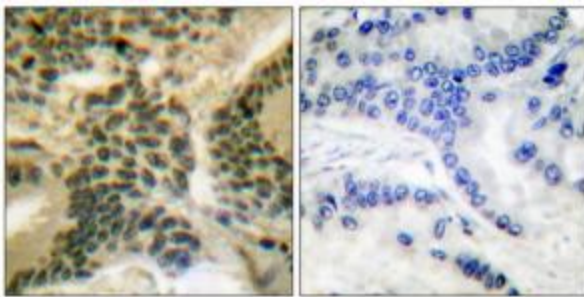
[View online »](#)

Protein Pathways: Chemokine signaling pathway, Endocytosis, Insulin signaling pathway, Tight junction, Type II diabetes mellitus

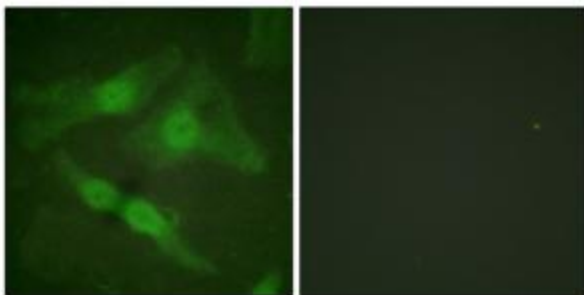
Product images:



Western blot analysis of extracts from NIH/3T3 cells treated with PMA (125ng/ml, 30mins), using PKC ζ (phospho-Thr410) antibody. The lane on the right is treated with the synthesized peptide.



Immunohistochemical analysis of paraffin-embedded human lung carcinoma tissue, using PKC ζ (phospho-Thr410) antibody. The picture on the right is treated with the synthesized peptide.



Immunofluorescence analysis of HeLa cells, using PKC ζ (phospho-Thr410) antibody. The picture on the right is treated with the synthesized peptide.