

Product datasheet for **TA312036**

PRKAR1B Rabbit Polyclonal Antibody

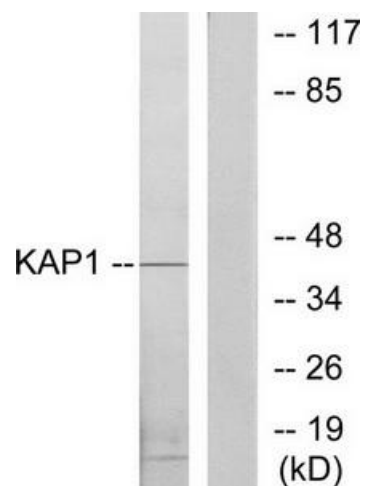
Product data:

Product Type:	Primary Antibodies
Applications:	WB
Recommended Dilution:	WB: 1:500~1:3000, ELISA: 1:20000
Reactivity:	Human, Mouse, Rat
Host:	Rabbit
Isotype:	IgG
Clonality:	Polyclonal
Immunogen:	The antiserum was produced against synthesized peptide derived from internal of human KAP1.
Formulation:	Phosphate buffered saline (without Mg ²⁺ and Ca ²⁺), pH 7.4, 150mM NaCl, 0.02% sodium azide and 50% glycerol.
Concentration:	lot specific
Purification:	The antibody was affinity-purified from rabbit antiserum by affinity-chromatography using epitope-specific immunogen.
Conjugation:	Unconjugated
Storage:	Store at -20°C as received.
Stability:	Stable for 12 months from date of receipt.
Gene Name:	protein kinase cAMP-dependent type I regulatory subunit beta
Database Link:	NP_002726 Entrez Gene 19085 MouseEntrez Gene 25521 RatEntrez Gene 5575 Human P31321
Synonyms:	PRKAR1
Note:	KAP1 antibody detects endogenous levels of total KAP1 protein.
Protein Families:	Druggable Genome
Protein Pathways:	Apoptosis, Insulin signaling pathway



[View online »](#)

Product images:



Western blot analysis of extracts from COLO205 cells, using KAP1 antibody. The lane on the right is treated with the synthesized peptide.