

## Product datasheet for **TA312033**

### AMPK gamma 1 (PRKAG1) Rabbit Polyclonal Antibody

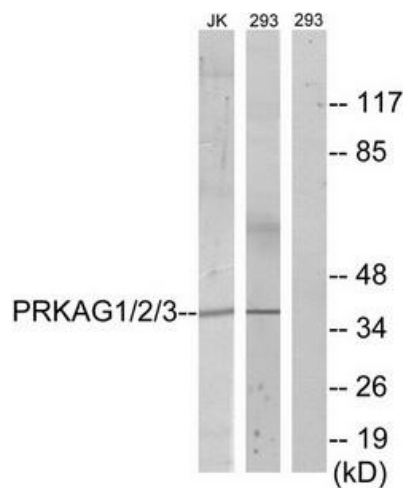
#### Product data:

Product Type:	Primary Antibodies
Applications:	WB
Recommended Dilution:	WB: 1:500~1:3000, ELISA: 1:5000
Reactivity:	Human, Mouse, Rat
Host:	Rabbit
Isotype:	IgG
Clonality:	Polyclonal
Immunogen:	The antiserum was produced against synthesized peptide derived from internal of human PRKAG1/2/3.
Formulation:	Phosphate buffered saline (without Mg <sup>2+</sup> and Ca <sup>2+</sup> ), pH 7.4, 150mM NaCl, 0.02% sodium azide and 50% glycerol.
Concentration:	lot specific
Purification:	The antibody was affinity-purified from rabbit antiserum by affinity-chromatography using epitope-specific immunogen.
Conjugation:	Unconjugated
Storage:	Store at -20°C as received.
Stability:	Stable for 12 months from date of receipt.
Gene Name:	protein kinase AMP-activated non-catalytic subunit gamma 1
Database Link:	<a href="#">NP_002724</a> <a href="#">Entrez Gene 19082 Mouse</a> <a href="#">Entrez Gene 25520 Rat</a> <a href="#">Entrez Gene 5571 Human</a> <a href="#">P54619</a>
Synonyms:	AMPKG
Note:	PRKAG1/2/3 antibody detects endogenous levels of total PRKAG1/2/3 protein.
Protein Families:	Druggable Genome
Protein Pathways:	Adipocytokine signaling pathway, Hypertrophic cardiomyopathy (HCM), Insulin signaling pathway



[View online »](#)

## Product images:



Western blot analysis of extracts from Jurkat cells and 293 cells, using PRKAG1/2/3 antibody. The lane on the right is treated with the synthesized peptide.