

Product datasheet for **TA312020**

PDGF Receptor beta (PDGFRB) Rabbit Polyclonal Antibody

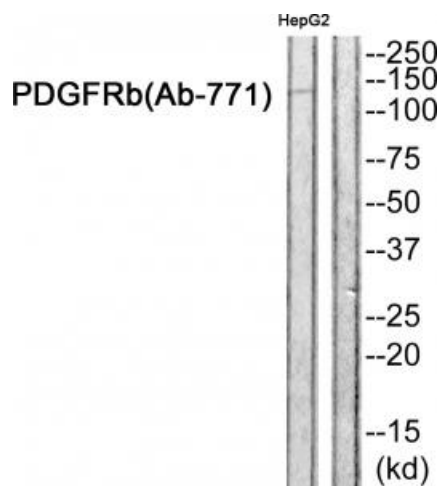
Product data:

Product Type:	Primary Antibodies
Applications:	WB
Recommended Dilution:	WB: 1:500~1:3000, ELISA: 1:40000
Reactivity:	Human, Rat
Host:	Rabbit
Isotype:	IgG
Clonality:	Polyclonal
Immunogen:	The antiserum was produced against synthesized peptide derived from Internal of human PDGFRB.
Formulation:	Phosphate buffered saline (without Mg ²⁺ and Ca ²⁺), pH 7.4, 150mM NaCl, 0.02% sodium azide and 50% glycerol.
Concentration:	lot specific
Purification:	The antibody was affinity-purified from rabbit antiserum by affinity-chromatography using epitope-specific immunogen.
Conjugation:	Unconjugated
Storage:	Store at -20°C as received.
Stability:	Stable for 12 months from date of receipt.
Gene Name:	platelet derived growth factor receptor beta
Database Link:	NP_002600 Entrez Gene 24629 Rat Entrez Gene 5159 Human P09619
Synonyms:	CD140B; IBGC4; IMF1; JTK12; PDGFR; PDGFR-1; PDGFR1
Note:	PDGFRb (Ab-771) antibody detects endogenous levels of total PDGFRB protein.
Protein Families:	Druggable Genome, ES Cell Differentiation/IPS, Protein Kinase, Transmembrane
Protein Pathways:	Calcium signaling pathway, Colorectal cancer, Cytokine-cytokine receptor interaction, Focal adhesion, Gap junction, Glioma, MAPK signaling pathway, Melanoma, Pathways in cancer, Prostate cancer, Regulation of actin cytoskeleton



[View online »](#)

Product images:



Western blot analysis of extracts from HepG2 cells, using PDGFRb (Ab-771) antibody. The lane on the right is treated with the synthesized peptide.