

Product datasheet for **TA312013**

NEUROD1 Rabbit Polyclonal Antibody

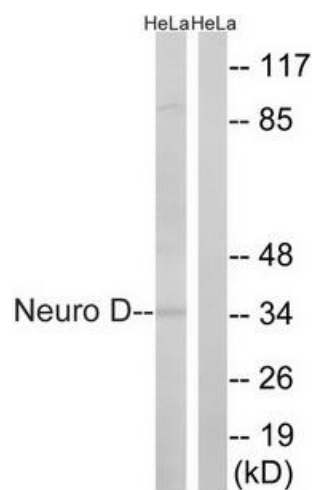
Product data:

Product Type:	Primary Antibodies
Applications:	WB
Recommended Dilution:	WB: 1:500~1:3000, ELISA: 1:1000
Reactivity:	Human, Mouse, Rat
Host:	Rabbit
Isotype:	IgG
Clonality:	Polyclonal
Immunogen:	The antiserum was produced against synthesized non-phosphopeptide derived from human Neuro D around the phosphorylation site of serine 272 (P-L-SP-P-P-).
Formulation:	Phosphate buffered saline (without Mg ²⁺ and Ca ²⁺), pH 7.4, 150mM NaCl, 0.02% sodium azide and 50% glycerol.
Concentration:	lot specific
Purification:	The antibody was affinity-purified from rabbit antiserum by affinity-chromatography using epitope-specific immunogen.
Conjugation:	Unconjugated
Storage:	Store at -20°C as received.
Stability:	Stable for 12 months from date of receipt.
Gene Name:	neuronal differentiation 1
Database Link:	NP_002491 Entrez Gene 18012 Mouse Entrez Gene 29458 Rat Entrez Gene 4760 Human Q13562
Synonyms:	BETA2; BHF-1; bHLHa3; MODY6; NEUROD
Note:	Neuro D (Ab-274) antibody detects endogenous levels of total Neuro D protein.
Protein Families:	Adult stem cells, Druggable Genome, Embryonic stem cells, ES Cell Differentiation/IPS, Transcription Factors
Protein Pathways:	Maturity onset diabetes of the young



[View online »](#)

Product images:



Western blot analysis of extracts from HeLa cells, using Neuro D (Ab-274) antibody. The lane on the right is treated with the synthesized peptide.