

Product datasheet for **TA312010**

EMA (MUC1) Rabbit Polyclonal Antibody

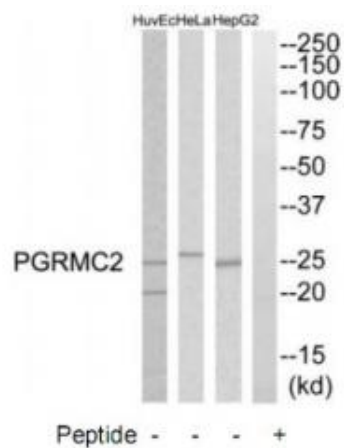
Product data:

Product Type:	Primary Antibodies
Applications:	WB
Recommended Dilution:	WB: 1:500~1:3000, ELISA: 1:5000
Reactivity:	Human, Mouse, Rat
Host:	Rabbit
Isotype:	IgG
Clonality:	Polyclonal
Immunogen:	The antiserum was produced against synthesized peptide derived from C-terminal of human PGRMC2.
Formulation:	Phosphate buffered saline (without Mg ²⁺ and Ca ²⁺), pH 7.4, 150mM NaCl, 0.02% sodium azide and 50% glycerol.
Concentration:	lot specific
Purification:	The antibody was affinity-purified from rabbit antiserum by affinity-chromatography using epitope-specific immunogen.
Conjugation:	Unconjugated
Storage:	Store at -20°C as received.
Stability:	Stable for 12 months from date of receipt.
Gene Name:	mucin 1, cell surface associated
Database Link:	NP_002447 Entrez Gene 17829 Mouse Entrez Gene 24571 Rat Entrez Gene 4582 Human P15941
Synonyms:	ADMCKD; ADMCKD1; CA 15-3; CD227; EMA; H23AG; KL-6; MAM6; MCD; MCKD; MCKD1; MUC-1; SEC
Note:	PGRMC2 antibody detects endogenous levels of total PGRMC2 protein.
Protein Families:	Druggable Genome, Secreted Protein, Transmembrane



[View online »](#)

Product images:



Western blot analysis of extracts from HuvEc cells, HepG2 cells and HeLa cells, using PGRMC2 antibody. The lane on the right is treated with the synthesized peptide.