

## Product datasheet for **TA312004**

### MMP12 Rabbit Polyclonal Antibody

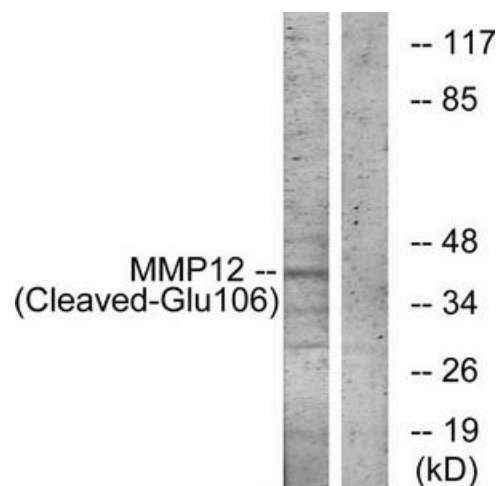
#### Product data:

Product Type:	Primary Antibodies
Applications:	WB
Recommended Dilution:	WB: 1:500~1:3000, ELISA: 1:20000
Reactivity:	Human
Host:	Rabbit
Isotype:	IgG
Clonality:	Polyclonal
Immunogen:	The antiserum was produced against synthesized peptide derived from human MMP12.
Formulation:	Phosphate buffered saline (without Mg <sup>2+</sup> and Ca <sup>2+</sup> ), pH 7.4, 150mM NaCl, 0.02% sodium azide and 50% glycerol.
Concentration:	lot specific
Purification:	The antibody was affinity-purified from rabbit antiserum by affinity-chromatography using epitope-specific immunogen.
Conjugation:	Unconjugated
Storage:	Store at -20°C as received.
Stability:	Stable for 12 months from date of receipt.
Gene Name:	matrix metalloproteinase 12
Database Link:	<a href="#">NP_002417</a> <a href="#">Entrez Gene 4321 Human P39900</a>
Synonyms:	HME; ME; MME; MMP-12
Note:	MMP12 (Cleaved-Glu106) antibody detects endogenous levels of fragment of activated MMP12 resulting from cleavage adjacent to Glu106.
Protein Families:	Druggable Genome, Protease



[View online »](#)

## Product images:



Western blot analysis of extracts from NIH-3T3 cells, treated with etoposide (25uM, 1 hour), using MMP12 (Cleaved-Glu106) antibody. The lane on the right is treated with the synthesized peptide.