

Product datasheet for **TA311998**

MDM2 Rabbit Polyclonal Antibody

Product data:

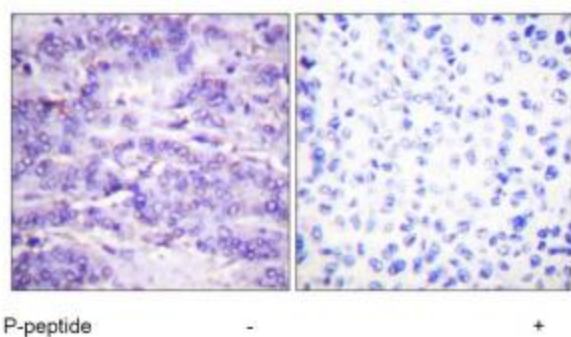
Product Type:	Primary Antibodies
Applications:	IF, IHC, WB
Recommended Dilution:	WB: 1:500~1:3000, IHC: 1:50~1:100, IF: 1:100~1:500, ELISA: 1:5000
Reactivity:	Human, Mouse
Modifications:	Phospho-specific
Host:	Rabbit
Isotype:	IgG
Clonality:	Polyclonal
Immunogen:	The antiserum was produced against synthesized phosphopeptide derived from human MDM2 around the phosphorylation site of serine 166 (A-I-SP-E-T).
Formulation:	Phosphate buffered saline (without Mg ²⁺ and Ca ²⁺), pH 7.4, 150mM NaCl, 0.02% sodium azide and 50% glycerol.
Concentration:	lot specific
Purification:	The antibody was affinity-purified from rabbit antiserum by affinity-chromatography using epitope-specific immunogen.
Conjugation:	Unconjugated
Storage:	Store at -20°C as received.
Stability:	Stable for 12 months from date of receipt.
Gene Name:	MDM2 proto-oncogene
Database Link:	NP_116128 Entrez Gene 84825 Human Entrez Gene 4193 Human Q00987
Synonyms:	Hdm2; HDMX; MGC5370; MGC71221; OTTHUMP00000183495
Note:	MDM2 (Phospho-Ser166) antibody detects endogenous levels of MDM2 only when phosphorylated at serine 166.



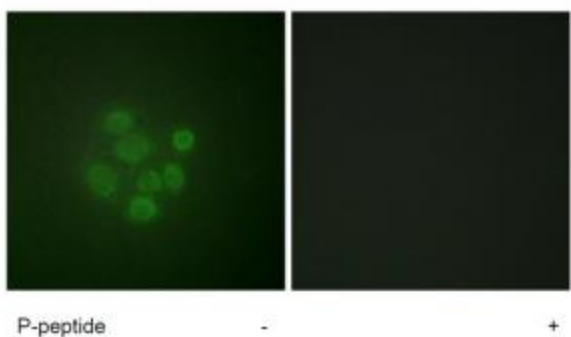
[View online »](#)

Product images:


Western blot analysis of extracts from COS7 cells, using MDM2 (Phospho-Ser166) antibody. The lane on the right is treated with the synthesized peptide.



Immunohistochemistry analysis of paraffin-embedded human breast carcinoma tissue using MDM2 (Phospho-Ser166) antibody. The picture on the right is treated with the synthesized peptide.



Immunofluorescence analysis of A549 cells, using MDM2 (Phospho-Ser166) antibody. The picture on the right is treated with the synthesized peptide.