

Product datasheet for **TA311996**

MDM2 Rabbit Polyclonal Antibody

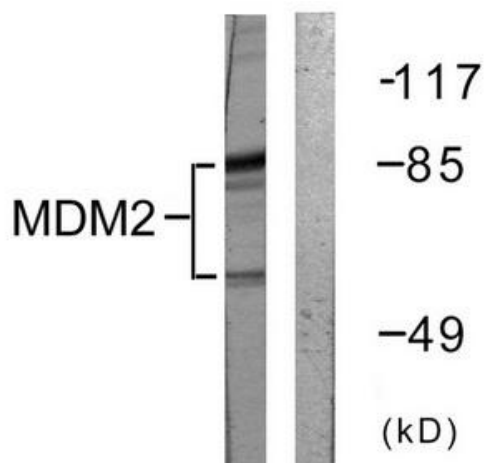
Product data:

Product Type:	Primary Antibodies
Applications:	IF, WB
Recommended Dilution:	WB: 1:500~1:3000, IF: 1:100~1:500, ELISA: 1:1000
Reactivity:	Human, Mouse
Host:	Rabbit
Isotype:	IgG
Clonality:	Polyclonal
Immunogen:	The antiserum was produced against synthesized non-phosphopeptide derived from human MDM2 around the phosphorylation site of serine 166 (A-I-SP-E-T).
Formulation:	Phosphate buffered saline (without Mg ²⁺ and Ca ²⁺), pH 7.4, 150mM NaCl, 0.02% sodium azide and 50% glycerol.
Concentration:	lot specific
Purification:	The antibody was affinity-purified from rabbit antiserum by affinity-chromatography using epitope-specific immunogen.
Conjugation:	Unconjugated
Storage:	Store at -20°C as received.
Stability:	Stable for 12 months from date of receipt.
Gene Name:	MDM2 proto-oncogene
Database Link:	NP_002383 Entrez Gene 17246 Mouse Entrez Gene 4193 Human Q00987
Synonyms:	ACTFS; hdm2; HDMX
Note:	MDM2 (Ab-166) antibody detects endogenous levels of total MDM2 protein.
Protein Families:	Druggable Genome, Transcription Factors
Protein Pathways:	Bladder cancer, Cell cycle, Chronic myeloid leukemia, Endocytosis, Glioma, Melanoma, p53 signaling pathway, Pathways in cancer, Prostate cancer, Ubiquitin mediated proteolysis

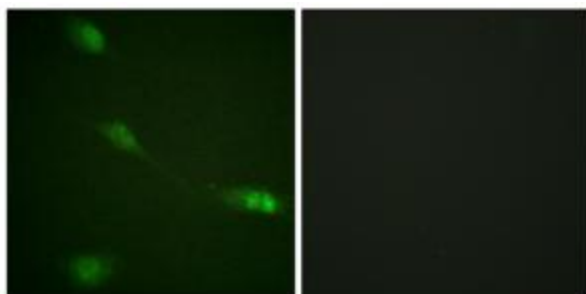


[View online »](#)

Product images:



Western blot analysis of extracts from COS7 cells, using MDM2 (Ab-166) antibody. The lane on the right is treated with the synthesized peptide.



Immunofluorescence analysis of NIH/3T3 cells, using MDM2 (Ab-166) antibody. The picture on the right is treated with the synthesized peptide.