

Product datasheet for **TA311993**

Scaf8 Rabbit Polyclonal Antibody

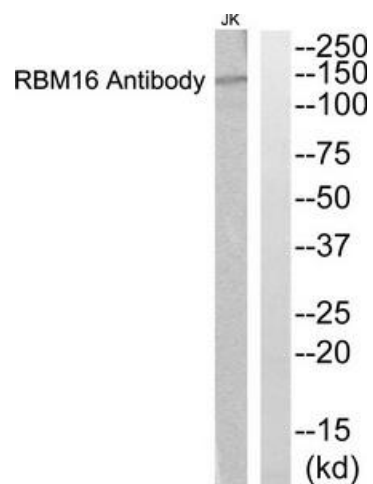
Product data:

Product Type:	Primary Antibodies
Applications:	WB
Recommended Dilution:	WB: 1:500~1:3000, ELISA: 1:10000
Reactivity:	Human, Mouse, Rat
Host:	Rabbit
Isotype:	IgG
Clonality:	Polyclonal
Immunogen:	The antiserum was produced against synthesized peptide derived from Internal of human RBM16.
Formulation:	Phosphate buffered saline (without Mg ²⁺ and Ca ²⁺), pH 7.4, 150mM NaCl, 0.02% sodium azide and 50% glycerol.
Concentration:	lot specific
Purification:	The antibody was affinity-purified from rabbit antiserum by affinity-chromatography using epitope-specific immunogen.
Conjugation:	Unconjugated
Storage:	Store at -20°C as received.
Stability:	Stable for 12 months from date of receipt.
Gene Name:	SR-related CTD-associated factor 8
Database Link:	NP_598884 Entrez Gene 22828 Human Entrez Gene 245926 Rat Entrez Gene 106583 Mouse Q6DID3
Synonyms:	A630086M08Rik; A930036P18Rik; AA408306; AI447644; AI448652; AU015035; mKIAA1116; Rbm16
Note:	RBM16 Antibody detects endogenous levels of total RBM16 protein.



[View online »](#)

Product images:



Western blot analysis of extracts from JK cells, using RBM16 Antibody. The lane on the right is treated with the synthesized peptide.