

Product datasheet for **TA311992**

MC1 Receptor (MC1R) Rabbit Polyclonal Antibody

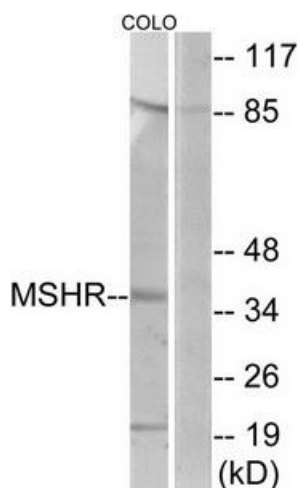
Product data:

Product Type:	Primary Antibodies
Applications:	IF, WB
Recommended Dilution:	WB: 1:500~1:3000, IF: 1:100~1:500, ELISA: 1:1000
Reactivity:	Human
Host:	Rabbit
Isotype:	IgG
Clonality:	Polyclonal
Immunogen:	The antiserum was produced against synthesized peptide derived from internal of human MSHR.
Formulation:	Phosphate buffered saline (without Mg ²⁺ and Ca ²⁺), pH 7.4, 150mM NaCl, 0.02% sodium azide and 50% glycerol.
Concentration:	lot specific
Purification:	The antibody was affinity-purified from rabbit antiserum by affinity-chromatography using epitope-specific immunogen.
Conjugation:	Unconjugated
Storage:	Store at -20°C as received.
Stability:	Stable for 12 months from date of receipt.
Gene Name:	melanocortin 1 receptor
Database Link:	NP_002377 Entrez Gene 4157 Human Q01726
Synonyms:	CMM5; MSH-R; SHEP2
Note:	MSHR antibody detects endogenous levels of total MSHR protein.
Protein Families:	Druggable Genome, GPCR, Transmembrane
Protein Pathways:	Melanogenesis, Neuroactive ligand-receptor interaction

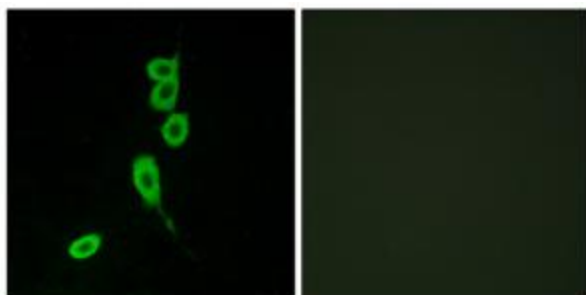


[View online »](#)

Product images:



Western blot analysis of extracts from COLO205 cells, using MSHR antibody. The lane on the right is treated with the synthesized peptide.



Immunofluorescence analysis of LOVO cells, using MSHR antibody. The picture on the right is treated with the synthesized peptide.