

Product datasheet for **TA311990**

MAD2 (MAD2L1) Rabbit Polyclonal Antibody

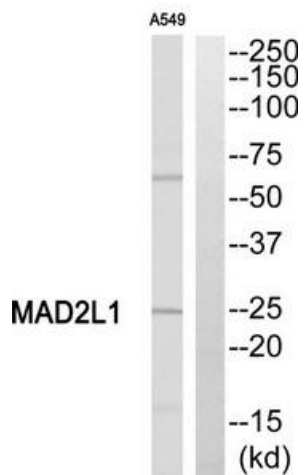
Product data:

Product Type:	Primary Antibodies
Applications:	WB
Recommended Dilution:	WB: 1:500~1:3000, ELISA: 1:5000
Reactivity:	Human
Host:	Rabbit
Isotype:	IgG
Clonality:	Polyclonal
Immunogen:	The antiserum was produced against synthesized peptide derived from internal of human MAD2L1.
Formulation:	Phosphate buffered saline (without Mg ²⁺ and Ca ²⁺), pH 7.4, 150mM NaCl, 0.02% sodium azide and 50% glycerol.
Concentration:	lot specific
Purification:	The antibody was affinity-purified from rabbit antiserum by affinity-chromatography using epitope-specific immunogen.
Conjugation:	Unconjugated
Storage:	Store at -20°C as received.
Stability:	Stable for 12 months from date of receipt.
Gene Name:	MAD2 mitotic arrest deficient-like 1 (yeast)
Database Link:	NP_002349 Entrez Gene 4085 Human Q13257
Synonyms:	HSMAD2; MAD2
Note:	MAD2L1 antibody detects endogenous levels of total MAD2L1 protein.
Protein Families:	Druggable Genome
Protein Pathways:	Cell cycle, Oocyte meiosis, Progesterone-mediated oocyte maturation



[View online »](#)

Product images:



Western blot analysis of extracts from A549 cells, using MAD2L1 antibody. The lane on the right is treated with the synthesized peptide.