

## Product datasheet for **TA311989**

### EPCAM Rabbit Polyclonal Antibody

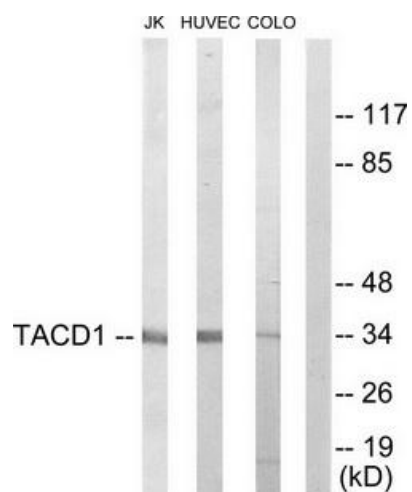
#### Product data:

Product Type:	Primary Antibodies
Applications:	WB
Recommended Dilution:	WB: 1:500~1:3000, ELISA: 1:5000
Reactivity:	Human
Host:	Rabbit
Isotype:	IgG
Clonality:	Polyclonal
Immunogen:	The antiserum was produced against synthesized peptide derived from internal of human TACD1.
Formulation:	Phosphate buffered saline (without Mg <sup>2+</sup> and Ca <sup>2+</sup> ), pH 7.4, 150mM NaCl, 0.02% sodium azide and 50% glycerol.
Concentration:	lot specific
Purification:	The antibody was affinity-purified from rabbit antiserum by affinity-chromatography using epitope-specific immunogen.
Conjugation:	Unconjugated
Storage:	Store at -20°C as received.
Stability:	Stable for 12 months from date of receipt.
Gene Name:	epithelial cell adhesion molecule
Database Link:	<a href="#">NP_002345</a> <a href="#">Entrez Gene 4072 Human</a> <a href="#">P16422</a>
Synonyms:	4; DIAR5; EGP-2; EGP40; EGP314; ESA; HNPCC8; KS1; KSA; M4S1; MIC18; MK-1; TACSTD1; TROP1
Note:	TACD1 antibody detects endogenous levels of total TACD1 protein.
Protein Families:	ES Cell Differentiation/IPS, Transmembrane



[View online »](#)

## Product images:



Western blot analysis of extracts from Jurkat cells, HuvEc cells and COLO205 cells, using TACD1 antibody. The lane on the right is treated with the synthesized peptide.