

Product datasheet for **TA311988**

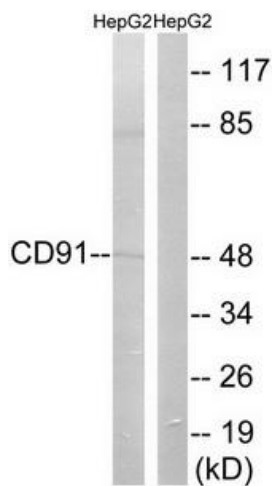
LRP1 Rabbit Polyclonal Antibody

Product data:

| | |
|-----------------------|--|
| Product Type: | Primary Antibodies |
| Applications: | WB |
| Recommended Dilution: | WB: 1:500~1:3000, ELISA: 1:40000 |
| Reactivity: | Human, Mouse |
| Host: | Rabbit |
| Isotype: | IgG |
| Clonality: | Polyclonal |
| Immunogen: | The antiserum was produced against synthesized non-phosphopeptide derived from human CD91 around the phosphorylation site of serine 4520 (R-H-SP-L-A). |
| Formulation: | Phosphate buffered saline (without Mg ²⁺ and Ca ²⁺), pH 7.4, 150mM NaCl, 0.02% sodium azide and 50% glycerol. |
| Concentration: | lot specific |
| Purification: | The antibody was affinity-purified from rabbit antiserum by affinity-chromatography using epitope-specific immunogen. |
| Conjugation: | Unconjugated |
| Storage: | Store at -20°C as received. |
| Stability: | Stable for 12 months from date of receipt. |
| Gene Name: | LDL receptor related protein 1 |
| Database Link: | NP_002323 Entrez Gene 16971 Mouse Entrez Gene 4035 Human Q07954 |
| Synonyms: | A2MR; APOER; APR; CD91; IGFBP3R; LRP; LRP1A; TGFBR5 |
| Note: | CD91 (Ab-4520) antibody detects endogenous levels of total CD91 protein. |
| Protein Families: | Druggable Genome, Transmembrane |
| Protein Pathways: | Alzheimer's disease |



[View online »](#)

Product images:

Western blot analysis of extracts from HepG2 cells, using CD91 (Ab-4520) antibody. The lane on the right is treated with the synthesized peptide.