

## Product datasheet for **TA311983**

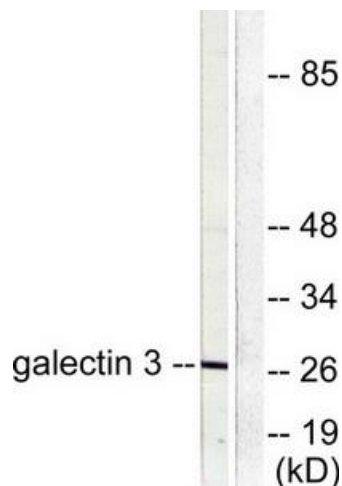
### Galectin 3 (LGALS3) Rabbit Polyclonal Antibody

#### Product data:

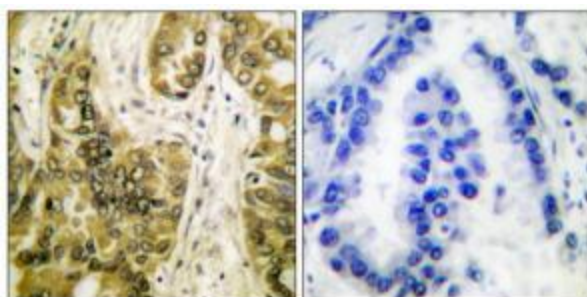
Product Type:	Primary Antibodies
Applications:	IF, IHC, WB
Recommended Dilution:	WB: 1:500~1:3000, IHC: 1:50~1:100, IF: 1:100~1:500, ELISA: 1:5000
Reactivity:	Human, Mouse, Rat
Host:	Rabbit
Isotype:	IgG
Clonality:	Polyclonal
Immunogen:	The antiserum was produced against synthesized peptide derived from human Galectin 3.
Formulation:	Phosphate buffered saline (without Mg <sup>2+</sup> and Ca <sup>2+</sup> ), pH 7.4, 150mM NaCl, 0.02% sodium azide and 50% glycerol.
Concentration:	lot specific
Purification:	The antibody was affinity-purified from rabbit antiserum by affinity-chromatography using epitope-specific immunogen.
Conjugation:	Unconjugated
Storage:	Store at -20°C as received.
Stability:	Stable for 12 months from date of receipt.
Gene Name:	lectin, galactoside binding soluble 3
Database Link:	<a href="#">NP_002297</a> <a href="#">Entrez Gene 16854 Mouse</a> <a href="#">Entrez Gene 83781 Rat</a> <a href="#">Entrez Gene 3958 Human</a> <a href="#">P17931</a>
Synonyms:	CBP35; GAL3; GALBP; GALIG; L31; LGALS2; MAC2
Note:	Galectin 3 antibody detects endogenous levels of total Galectin 3 protein.
Protein Families:	Secreted Protein



[View online »](#)

**Product images:**

Western blot analysis of extracts from HeLa cells, using Galectin 3 antibody (#TA311983). The lane on the right is treated with the synthesized peptide.



Immunohistochemical analysis of paraffin-embedded human lung carcinoma tissue using Galectin 3 antibody (#TA311983). The picture on the right is treated with the synthesized peptide.



Immunofluorescence analysis of NIH/3T3 cells, using Galectin 3 antibody (#TA311983). The picture on the right is treated with the synthesized peptide.