

Product datasheet for **TA311972**

gamma Catenin (JUP) Rabbit Polyclonal Antibody

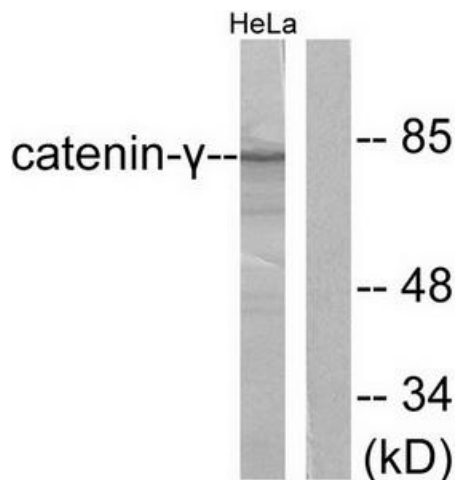
Product data:

Product Type:	Primary Antibodies
Applications:	IHC, WB
Recommended Dilution:	WB: 1:500~1:3000, IHC: 1:50~1:100, ELISA: 1:20000
Reactivity:	Human, Mouse, Rat
Host:	Rabbit
Isotype:	IgG
Clonality:	Polyclonal
Immunogen:	The antiserum was produced against synthesized peptide derived from human Catenin-?
Formulation:	Phosphate buffered saline (without Mg ²⁺ and Ca ²⁺), pH 7.4, 150mM NaCl, 0.02% sodium azide and 50% glycerol.
Concentration:	lot specific
Purification:	The antibody was affinity-purified from rabbit antiserum by affinity-chromatography using epitope-specific immunogen.
Conjugation:	Unconjugated
Storage:	Store at -20°C as received.
Stability:	Stable for 12 months from date of receipt.
Gene Name:	junction plakoglobin
Database Link:	NP_002221 Entrez Gene 16480 Mouse Entrez Gene 81679 Rat Entrez Gene 3728 Human P14923
Synonyms:	ARVD12; CTNNG; DP3; DPIII; PDGB; PKGB
Note:	Catenin-. antibody detects endogenous levels of total Catenin-. protein.
Protein Families:	Druggable Genome
Protein Pathways:	Acute myeloid leukemia, Arrhythmogenic right ventricular cardiomyopathy (ARVC), Pathways in cancer

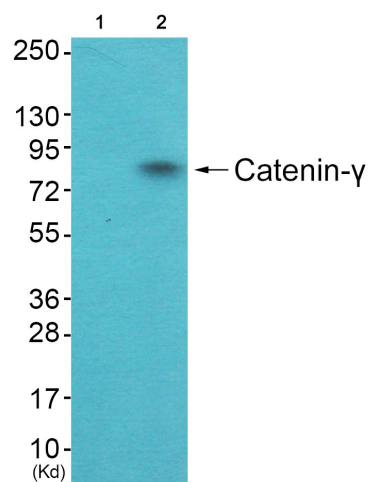


[View online »](#)

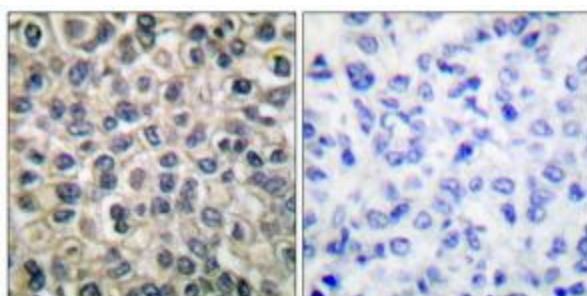
Product images:



Western blot analysis of extracts from HeLa cells, using Catenin- γ antibody. The lane on the right is treated with the synthesized peptide.



Western blot analysis of extracts from HuvEc cells (Lane 2), using Catenin- γ Antibody. The lane on the left is treated with synthesized peptide.



Immunohistochemical analysis of paraffin-embedded human breast carcinoma tissue using Catenin- γ antibody. The picture on the right is treated with the synthesized peptide.