

Product datasheet for **TA311963**

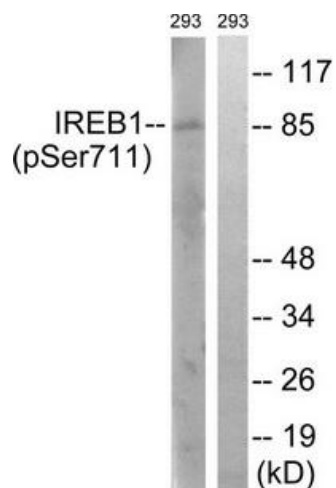
Aconitase 1 (ACO1) Rabbit Polyclonal Antibody

Product data:

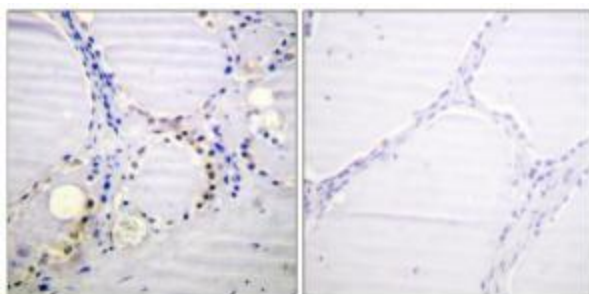
Product Type:	Primary Antibodies
Applications:	IHC, WB
Recommended Dilution:	WB: 1:500~1:3000, IHC: 1:50~1:100, ELISA: 1:10000
Reactivity:	Human, Mouse, Rat
Modifications:	Phospho-specific
Host:	Rabbit
Isotype:	IgG
Clonality:	Polyclonal
Immunogen:	The antiserum was produced against synthesized phosphopeptide derived from human IREB1 around the phosphorylation site of serine 711 (Y-G-SP-R-R).
Formulation:	Phosphate buffered saline (without Mg ²⁺ and Ca ²⁺), pH 7.4, 150mM NaCl, 0.02% sodium azide and 50% glycerol.
Concentration:	lot specific
Purification:	The antibody was affinity-purified from rabbit antiserum by affinity-chromatography using epitope-specific immunogen.
Conjugation:	Unconjugated
Storage:	Store at -20°C as received.
Stability:	Stable for 12 months from date of receipt.
Gene Name:	aconitase 1
Database Link:	NP_002188 Entrez Gene 11428 Mouse Entrez Gene 50655 Rat Entrez Gene 48 Human P21399
Synonyms:	ACONS; HEL60; IREB1; IREBP; IREBP1; IRP1
Note:	IREB1 (Phospho-Ser711) antibody detects endogenous levels of IREB1 only when phosphorylated at serine 711.
Protein Families:	Druggable Genome
Protein Pathways:	Citrate cycle (TCA cycle), Glyoxylate and dicarboxylate metabolism, Metabolic pathways


[View online »](#)

Product images:



Western blot analysis of extracts from 293 cells, treated with insulin (0.01U/ml, 30mins), using IREB1 (Phospho-Ser711) antibody. The lane on the right is treated with the synthesized peptide.



Immunohistochemistry analysis of paraffin-embedded human thyroid gland tissue, using IREB1 (Phospho-Ser711) antibody. The picture on the right is treated with the synthesized peptide.