

Product datasheet for **TA311958**

Hsp60 (HSPD1) Rabbit Polyclonal Antibody

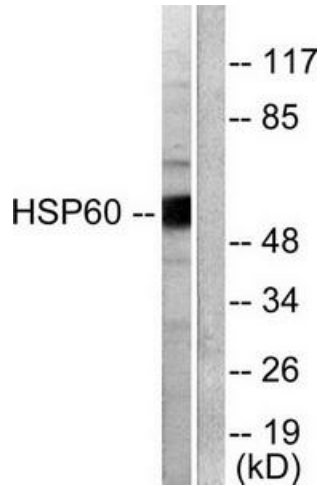
Product data:

Product Type:	Primary Antibodies
Applications:	IF, IHC, WB
Recommended Dilution:	WB: 1:500~1:3000, IHC: 1:50~1:100, IF: 1:100~1:500, ELISA: 1:10000
Reactivity:	Human, Mouse, Rat
Host:	Rabbit
Isotype:	IgG
Clonality:	Polyclonal
Immunogen:	The antiserum was produced against synthesized peptide derived from human HSP60.
Formulation:	Phosphate buffered saline (without Mg ²⁺ and Ca ²⁺), pH 7.4, 150mM NaCl, 0.02% sodium azide and 50% glycerol.
Concentration:	lot specific
Purification:	The antibody was affinity-purified from rabbit antiserum by affinity-chromatography using epitope-specific immunogen.
Conjugation:	Unconjugated
Storage:	Store at -20°C as received.
Stability:	Stable for 12 months from date of receipt.
Gene Name:	heat shock protein family D (Hsp60) member 1
Database Link:	NP_002147 Entrez Gene 15510 Mouse Entrez Gene 63868 Rat Entrez Gene 3329 Human P10809
Synonyms:	CPN60; GROEL; HLD4; HSP-60; HSP60; HSP65; HuCHA60; SPG13
Note:	HSP60 antibody detects endogenous levels of total HSP60 protein.
Protein Families:	Druggable Genome, Stem cell - Pluripotency
Protein Pathways:	RNA degradation, Type I diabetes mellitus

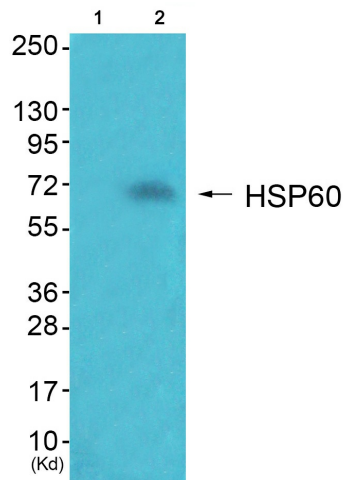


[View online »](#)

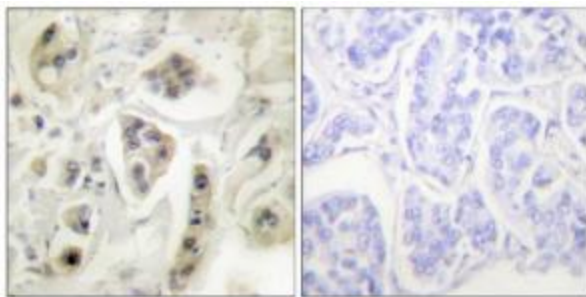
Product images:



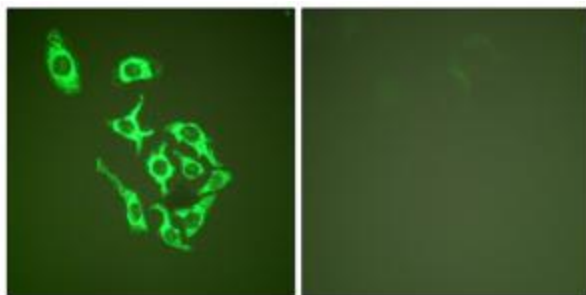
Western blot analysis of extracts from COLO205 cells, using HSP60 antibody (#TA311958).The lane on the right is treated with the synthesized peptide.



Western blot analysis of extracts from JK cells (Lane 2), using HSP60 Antibody. The lane on the left is treated with synthesized peptide.



Immunohistochemical analysis of paraffin-embedded human lung carcinoma tissue using HSP60 antibody (#TA311958).The picture on the right is treated with the synthesized peptide.



Immunofluorescence analysis of HepG2 cells, using HSP60 antibody (#TA311958). The picture on the right is treated with the synthesized peptide.