

Product datasheet for **TA311954**

HMG1 (HMGB1) Rabbit Polyclonal Antibody

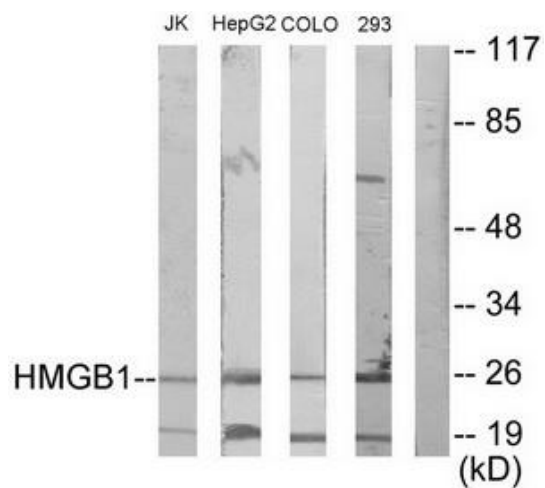
Product data:

Product Type:	Primary Antibodies
Applications:	WB
Recommended Dilution:	WB: 1:500~1:3000, ELISA: 1:20000
Reactivity:	Human, Mouse, Rat
Host:	Rabbit
Isotype:	IgG
Clonality:	Polyclonal
Immunogen:	The antiserum was produced against synthesized peptide derived from internal of human HMGB1.
Formulation:	Phosphate buffered saline (without Mg ²⁺ and Ca ²⁺), pH 7.4, 150mM NaCl, 0.02% sodium azide and 50% glycerol.
Concentration:	lot specific
Purification:	The antibody was affinity-purified from rabbit antiserum by affinity-chromatography using epitope-specific immunogen.
Conjugation:	Unconjugated
Storage:	Store at -20°C as received.
Stability:	Stable for 12 months from date of receipt.
Gene Name:	high mobility group box 1
Database Link:	NP_002119 Entrez Gene 15289 Mouse Entrez Gene 25459 Rat Entrez Gene 3146 Human P09429
Synonyms:	HMG1; HMG3; SBP-1
Note:	HMGB1 antibody detects endogenous levels of total HMGB1 protein.
Protein Families:	Druggable Genome, Stem cell - Pluripotency, Transcription Factors
Protein Pathways:	Base excision repair



[View online »](#)

Product images:



Western blot analysis of extracts from Jurkat cells, HepG2 cells, COLO205 cells and 293 cells, using HMGB1 antibody. The lane on the right is treated with the synthesized peptide.