

Product datasheet for **TA311953**

Histone H2A.X (H2AFX) Rabbit Polyclonal Antibody

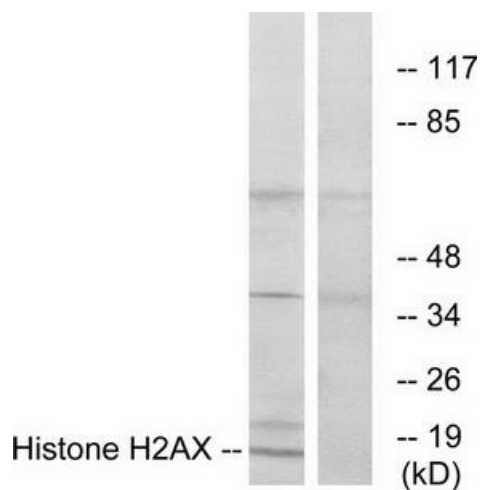
Product data:

Product Type:	Primary Antibodies
Applications:	IF, WB
Recommended Dilution:	WB: 1:500~1:3000, IF: 1:100~1:500, ELISA: 1:20000
Reactivity:	Human
Host:	Rabbit
Isotype:	IgG
Clonality:	Polyclonal
Immunogen:	The antiserum was produced against synthesized peptide derived from internal of human Histone H2AX.
Formulation:	Phosphate buffered saline (without Mg ²⁺ and Ca ²⁺), pH 7.4, 150mM NaCl, 0.02% sodium azide and 50% glycerol.
Concentration:	lot specific
Purification:	The antibody was affinity-purified from rabbit antiserum by affinity-chromatography using epitope-specific immunogen.
Conjugation:	Unconjugated
Storage:	Store at -20°C as received.
Stability:	Stable for 12 months from date of receipt.
Gene Name:	H2A histone family member X
Database Link:	NP_002096 Entrez Gene 3014 Human P16104
Synonyms:	H2A; H2A.X; H2AX; X
Note:	Histone H2AX antibody detects endogenous levels of total Histone H2AX protein.
Protein Families:	Druggable Genome
Protein Pathways:	Systemic lupus erythematosus

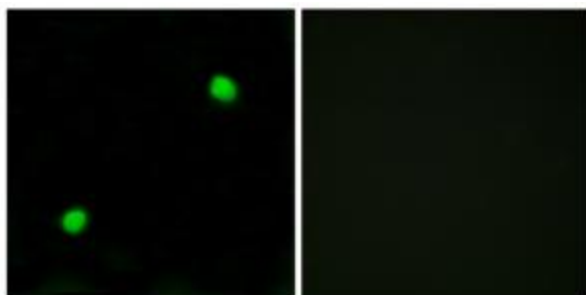


[View online »](#)

Product images:



Western blot analysis of extracts from HT-29 cells, using Histone H2AX antibody. The lane on the right is treated with the synthesized peptide.



Immunofluorescence analysis of COS7 cells, using Histone H2AX antibody. The picture on the right is treated with the synthesized peptide.