

Product datasheet for **TA311946**

GBP1 Rabbit Polyclonal Antibody

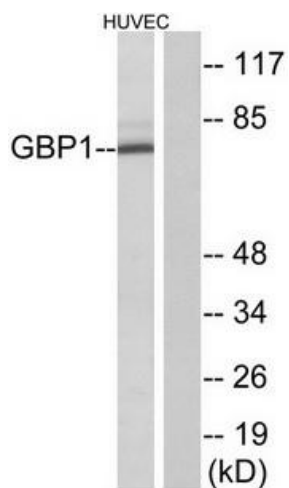
Product data:

Product Type:	Primary Antibodies
Applications:	IF, WB
Recommended Dilution:	WB: 1:500~1:3000, IF: 1:100~1:500, ELISA: 1:40000
Reactivity:	Human
Host:	Rabbit
Isotype:	IgG
Clonality:	Polyclonal
Immunogen:	The antiserum was produced against synthesized peptide derived from internal of human GBP1.
Formulation:	Phosphate buffered saline (without Mg ²⁺ and Ca ²⁺), pH 7.4, 150mM NaCl, 0.02% sodium azide and 50% glycerol.
Concentration:	lot specific
Purification:	The antibody was affinity-purified from rabbit antiserum by affinity-chromatography using epitope-specific immunogen.
Conjugation:	Unconjugated
Storage:	Store at -20°C as received.
Stability:	Stable for 12 months from date of receipt.
Gene Name:	guanylate binding protein 1
Database Link:	NP_002044 Entrez Gene 2633 Human P32455
Synonyms:	67kD; 67kDa; guanylate binding protein 1; interferon-inducible; OTTHUMP00000012352
Note:	GBP1 antibody detects endogenous levels of total GBP1 protein.

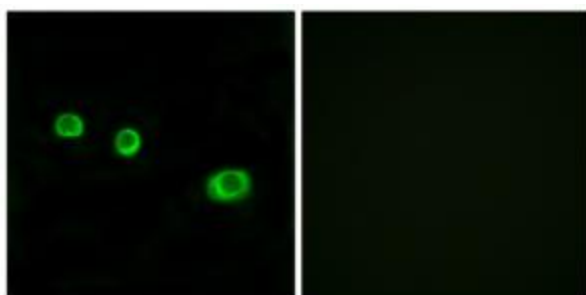


[View online »](#)

Product images:



Western blot analysis of extracts from HUVEC cells, using GBP1 antibody. The lane on the right is treated with the synthesized peptide.



Immunofluorescence analysis of MCF-7 cells, using GBP1 antibody. The picture on the right is treated with the synthesized peptide.