

Product datasheet for **TA311944**

GAB1 Rabbit Polyclonal Antibody

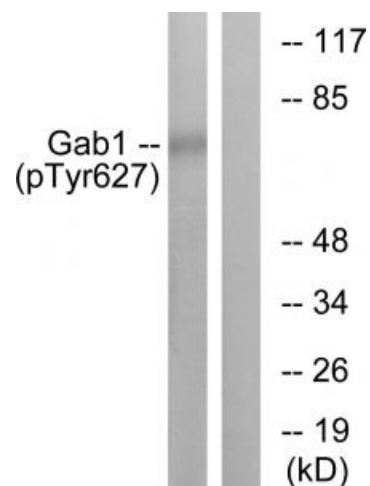
Product data:

Product Type:	Primary Antibodies
Applications:	WB
Recommended Dilution:	WB: 1:500~1:3000, ELISA: 1:10000
Reactivity:	Human, Mouse
Modifications:	Phospho-specific
Host:	Rabbit
Isotype:	IgG
Clonality:	Polyclonal
Immunogen:	The antiserum was produced against synthesized phosphopeptide derived from human Gab1 around the phosphorylation site of tyrosine 627 (V-E-YP-L-D)
Formulation:	Phosphate buffered saline (without Mg ²⁺ and Ca ²⁺), pH 7.4, 150mM NaCl, 0.02% sodium azide and 50% glycerol.
Concentration:	lot specific
Purification:	The antibody was affinity-purified from rabbit antiserum by affinity-chromatography using epitope-specific immunogen.
Conjugation:	Unconjugated
Storage:	Store at -20°C as received.
Stability:	Stable for 12 months from date of receipt.
Gene Name:	GRB2 associated binding protein 1
Database Link:	NP_002030 Entrez Gene 14388 Mouse Entrez Gene 2549 Human Q13480
Synonyms:	GRB2-associated binding protein 1
Note:	Gab1(phospho-Tyr627) antibody detects endogenous levels of Gab1 only when phosphorylated at tyrosine 627.
Protein Families:	Druggable Genome
Protein Pathways:	ErbB signaling pathway, Neurotrophin signaling pathway, Renal cell carcinoma



[View online »](#)

Product images:



Western blot analysis of extracts from HuvEc cells treated with EGF (200ng/ml, 10mins), using Gab1 (phospho-Tyr627) antibody. The lane on the right is treated with the synthesized peptide.