

## Product datasheet for **TA311939**

### FRK Rabbit Polyclonal Antibody

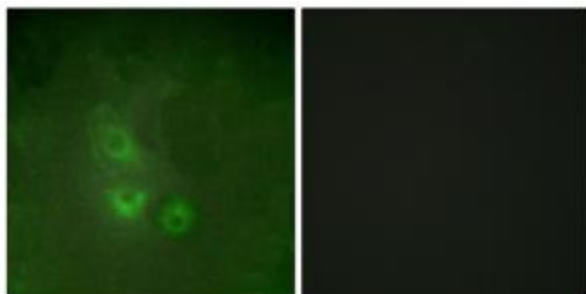
#### Product data:

Product Type:	Primary Antibodies
Applications:	IF, IHC, WB
Recommended Dilution:	WB: 1:500~1:3000, IHC: 1:50~1:100, IF: 1:100~1:500, ELISA: 1:1000
Reactivity:	Human, Mouse, Rat
Host:	Rabbit
Isotype:	IgG
Clonality:	Polyclonal
Immunogen:	The antiserum was produced against synthesized peptide derived from internal of human FRK.
Formulation:	Phosphate buffered saline (without Mg <sup>2+</sup> and Ca <sup>2+</sup> ), pH 7.4, 150mM NaCl, 0.02% sodium azide and 50% glycerol.
Concentration:	lot specific
Purification:	The antibody was affinity-purified from rabbit antiserum by affinity-chromatography using epitope-specific immunogen.
Conjugation:	Unconjugated
Storage:	Store at -20°C as received.
Stability:	Stable for 12 months from date of receipt.
Gene Name:	fyn related Src family tyrosine kinase
Database Link:	<a href="#">NP_002022</a> <a href="#">Entrez Gene 14302 Mouse</a> <a href="#">Entrez Gene 79209 Rat</a> <a href="#">Entrez Gene 2444 Human</a> <a href="#">P42685</a>
Synonyms:	GTK; PTK5; RAK
Note:	FRK antibody detects endogenous levels of total FRK protein.
Protein Families:	Druggable Genome, Protein Kinase

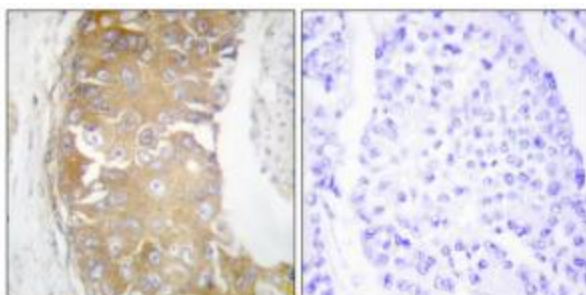


[View online »](#)

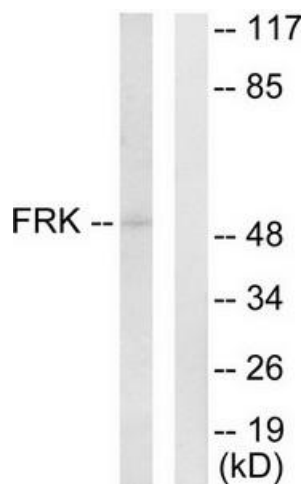
Product images:



Immunofluorescence analysis of HUVEC cells, using FRK antibody. The picture on the right is treated with the synthesized peptide.



Immunohistochemistry analysis of paraffin-embedded human breast carcinoma tissue using FRK antibody. The picture on the right is treated with the synthesized peptide.



Western blot analysis of extracts from Jurkat cells, using FRK antibody. The lane on the right is treated with the synthesized peptide.