

Product datasheet for **TA311937**

NSE (ENO2) Rabbit Polyclonal Antibody

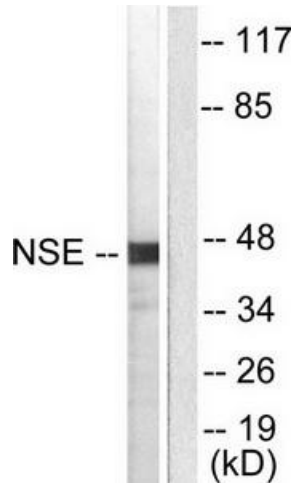
Product data:

Product Type:	Primary Antibodies
Applications:	IF, IHC, WB
Recommended Dilution:	WB: 1:500~1:3000, IHC: 1:50~1:100, IF: 1:100~1:500, ELISA: 1:5000
Reactivity:	Human, Mouse
Host:	Rabbit
Isotype:	IgG
Clonality:	Polyclonal
Immunogen:	The antiserum was produced against synthesized peptide derived from human NSE.
Formulation:	Phosphate buffered saline (without Mg ²⁺ and Ca ²⁺), pH 7.4, 150mM NaCl, 0.02% sodium azide and 50% glycerol.
Concentration:	lot specific
Purification:	The antibody was affinity-purified from rabbit antiserum by affinity-chromatography using epitope-specific immunogen.
Conjugation:	Unconjugated
Storage:	Store at -20°C as received.
Stability:	Stable for 12 months from date of receipt.
Gene Name:	enolase 2
Database Link:	NP_001966 Entrez Gene 13807 Mouse Entrez Gene 2026 Human P09104
Synonyms:	HEL-S-279; NSE
Note:	NSE antibody detects endogenous levels of total NSE protein.
Protein Pathways:	Glycolysis / Gluconeogenesis, Metabolic pathways, RNA degradation

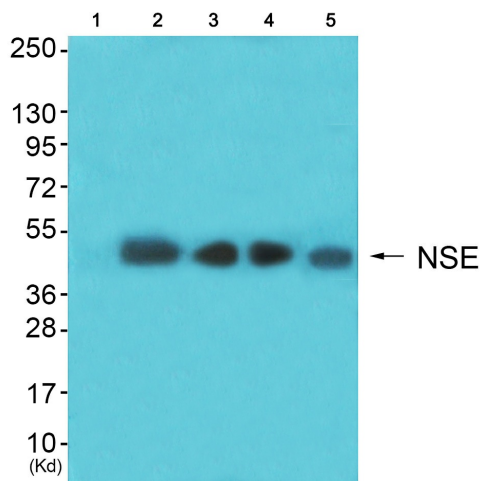


[View online »](#)

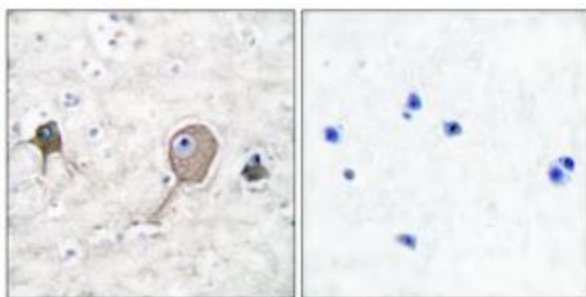
Product images:



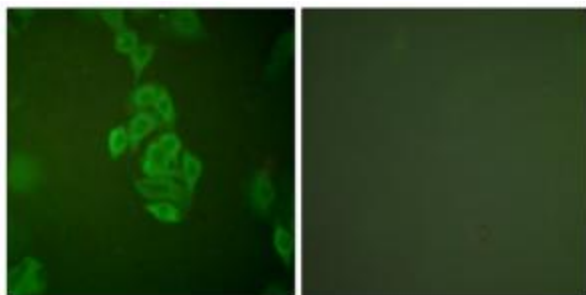
Western blot analysis of extracts from HepG2 cells, using NSE antibody (#TA311937). The lane on the right is treated with the synthesized peptide.



Western blot analysis of extracts from HeLa cells (Lane 2), colo cells (Lane 3), HepG2 cells (Lane 4) and 293 cells (Lane 5), using NSE Antibody. The lane on the left is treated with synthesized peptide.



Immunohistochemical analysis of paraffin-embedded human brain tissue using NSE antibody (#TA311937). The picture on the right is treated with the synthesized peptide.



Immunofluorescence analysis of A549 cells, using NSE antibody (#TA311937). The picture on the right is treated with the synthesized peptide.