

Product datasheet for **TA311933**

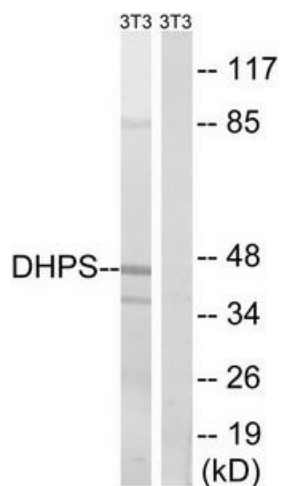
DHPS Rabbit Polyclonal Antibody

Product data:

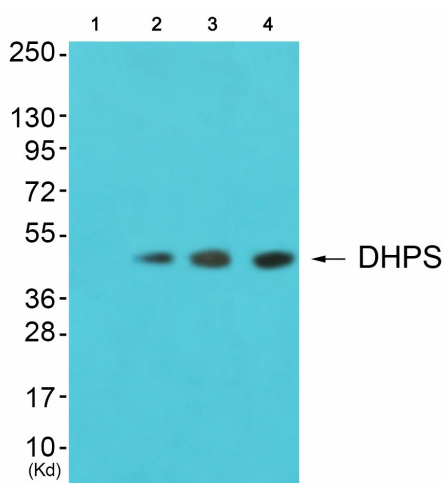
Product Type:	Primary Antibodies
Applications:	WB
Recommended Dilution:	WB: 1:500~1:3000, ELISA: 1:20000
Reactivity:	Human
Host:	Rabbit
Isotype:	IgG
Clonality:	Polyclonal
Immunogen:	The antiserum was produced against synthesized peptide derived from internal of human DHPS.
Formulation:	Phosphate buffered saline (without Mg ²⁺ and Ca ²⁺), pH 7.4, 150mM NaCl, 0.02% sodium azide and 50% glycerol.
Concentration:	lot specific
Purification:	The antibody was affinity-purified from rabbit antiserum by affinity-chromatography using epitope-specific immunogen.
Conjugation:	Unconjugated
Storage:	Store at -20°C as received.
Stability:	Stable for 12 months from date of receipt.
Gene Name:	deoxyhypusine synthase
Database Link:	NP_001921 Entrez Gene 1725 Human P49366
Synonyms:	DHS; DS; MIG13
Note:	DHPS antibody detects endogenous levels of total DHPS protein.



[View online »](#)

Product images:


Western blot analysis of extracts from 3T3 cells, using DHPS antibody. The lane on the right is treated with the synthesized peptide.



Western blot analysis of extracts from 3T3 cells (Lane 2), colo cells (Lane 3) and K562 cells (Lane 4), using DHPS Antibody. The lane on the left is treated with synthesized peptide.