

## Product datasheet for **TA311927**

### Cathepsin D (CTSD) Rabbit Polyclonal Antibody

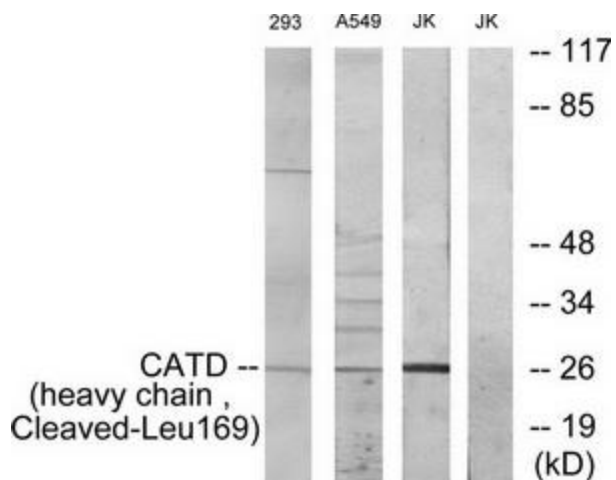
#### Product data:

Product Type:	Primary Antibodies
Applications:	WB
Recommended Dilution:	WB: 1:500~1:3000, ELISA: 1:40000
Reactivity:	Human
Host:	Rabbit
Isotype:	IgG
Clonality:	Polyclonal
Immunogen:	The antiserum was produced against synthesized peptide derived from human CATD.
Formulation:	Phosphate buffered saline (without Mg <sup>2+</sup> and Ca <sup>2+</sup> ), pH 7.4, 150mM NaCl, 0.02% sodium azide and 50% glycerol.
Concentration:	lot specific
Purification:	The antibody was affinity-purified from rabbit antiserum by affinity-chromatography using epitope-specific immunogen.
Conjugation:	Unconjugated
Storage:	Store at -20°C as received.
Stability:	Stable for 12 months from date of receipt.
Gene Name:	cathepsin D
Database Link:	<a href="#">NP_001900</a> <a href="#">Entrez Gene 1509 Human P07339</a>
Synonyms:	CLN10; CPSD; HEL-S-130P
Note:	CATD (heavy chain, Cleaved-Leu169) antibody detects endogenous levels of fragment of activated CATD resulting from cleavage adjacent to Leu169
Protein Families:	Druggable Genome, Protease
Protein Pathways:	Lysosome



[View online »](#)

Product images:



Western blot analysis of extracts from 293 cell treated with etoposide (25uM, 1hour), Jurkat cells and A549 cells treated with etoposide (25uM, 24hours), using CATD (heavy chain, Cleaved-Leu169) antibody. The lane on the right is treated with the synthesized peptide.