

Product datasheet for **TA311926**

Cathepsin D (CTSD) Rabbit Polyclonal Antibody

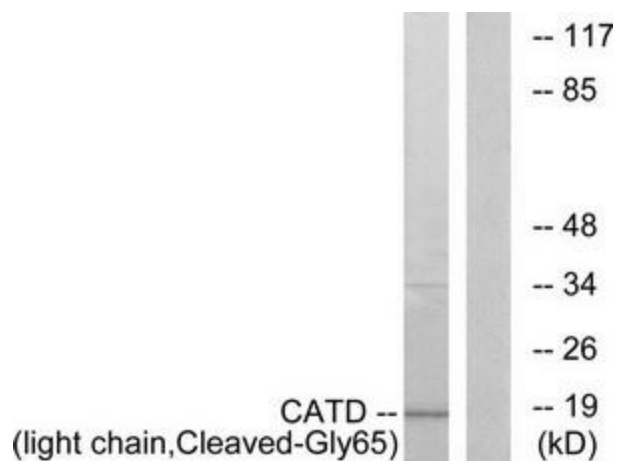
Product data:

Product Type:	Primary Antibodies
Applications:	WB
Recommended Dilution:	WB: 1:500~1:3000, ELISA: 1:20000
Reactivity:	Human
Host:	Rabbit
Isotype:	IgG
Clonality:	Polyclonal
Immunogen:	The antiserum was produced against synthesized peptide derived from human Cathepsin D AND light chain.
Formulation:	Phosphate buffered saline (without Mg ²⁺ and Ca ²⁺), pH 7.4, 150mM NaCl, 0.02% sodium azide and 50% glycerol.
Concentration:	lot specific
Purification:	The antibody was affinity-purified from rabbit antiserum by affinity-chromatography using epitope-specific immunogen.
Conjugation:	Unconjugated
Storage:	Store at -20°C as received.
Stability:	Stable for 12 months from date of receipt.
Gene Name:	cathepsin D
Database Link:	NP_001900 Entrez Gene 1509 Human P07339
Synonyms:	CLN10; CPSD; HEL-S-130P
Note:	CATD (light chain, Cleaved-Gly65) antibody detects endogenous levels of fragment of activated Cathepsin D AND light chain resulting from cleavage adjacent to Gly65.
Protein Families:	Druggable Genome, Protease
Protein Pathways:	Lysosome



[View online »](#)

Product images:



Western blot analysis of extracts from COS-7 cells, treated with etoposide (25uM, 1 hour), using CATD (light chain, Cleaved-Gly65) antibody. The lane on the right is treated with the synthesized peptide.