

## Product datasheet for **TA311924**

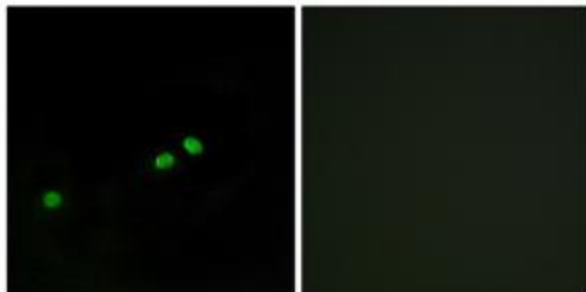
### CENPA Rabbit Polyclonal Antibody

#### Product data:

Product Type:	Primary Antibodies
Applications:	IF
Recommended Dilution:	IF: 1:100~1:500, ELISA: 1:10000
Reactivity:	Human
Modifications:	Phospho-specific
Host:	Rabbit
Isotype:	IgG
Clonality:	Polyclonal
Immunogen:	The antiserum was produced against synthesized phosphopeptide derived from human Centromeric Protein A around the phosphorylation site of serine 7 (R-R-SP-R-K).
Formulation:	Phosphate buffered saline (without Mg <sup>2+</sup> and Ca <sup>2+</sup> ), pH 7.4, 150mM NaCl, 0.02% sodium azide and 50% glycerol.
Concentration:	lot specific
Purification:	The antibody was affinity-purified from rabbit antiserum by affinity-chromatography using epitope-specific immunogen.
Conjugation:	Unconjugated
Storage:	Store at -20°C as received.
Stability:	Stable for 12 months from date of receipt.
Gene Name:	centromere protein A
Database Link:	<a href="#">NP_001800</a> <a href="#">Entrez Gene 1058 Human P49450</a>
Synonyms:	CenH3; CENP-A
Note:	Centromeric Protein A (Phospho-Ser7) antibody detects endogenous levels of Centromeric Protein A only when phosphorylated at serine 7.



[View online »](#)

**Product images:**

Immunofluorescence analysis of HeLa cells, using Centromeric Protein A (Phospho-Ser7) antibody. The picture on the right is treated with the synthesized peptide.