

Product datasheet for **TA311920**

Cadherin 8 (CDH8) Rabbit Polyclonal Antibody

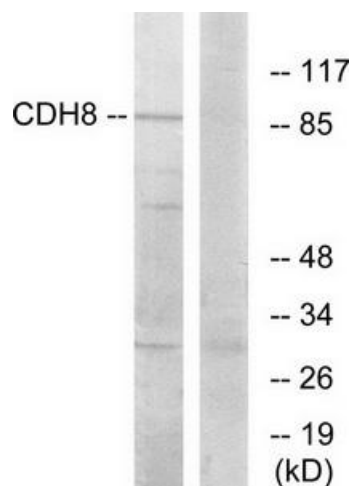
Product data:

Product Type:	Primary Antibodies
Applications:	IF, IHC, WB
Recommended Dilution:	WB: 1:500~1:3000, IHC: 1:50~1:100, IF: 1:100~1:500, ELISA: 1:20000
Reactivity:	Human, Mouse, Rat
Host:	Rabbit
Isotype:	IgG
Clonality:	Polyclonal
Immunogen:	The antiserum was produced against synthesized peptide derived from internal of human CDH8.
Formulation:	Phosphate buffered saline (without Mg ²⁺ and Ca ²⁺), pH 7.4, 150mM NaCl, 0.02% sodium azide and 50% glycerol.
Concentration:	lot specific
Purification:	The antibody was affinity-purified from rabbit antiserum by affinity-chromatography using epitope-specific immunogen.
Conjugation:	Unconjugated
Storage:	Store at -20°C as received.
Stability:	Stable for 12 months from date of receipt.
Gene Name:	cadherin 8
Database Link:	NP_001787 Entrez Gene 12564 MouseEntrez Gene 84408 RatEntrez Gene 1006 Human P55286
Synonyms:	Nbla04261
Note:	CDH8 antibody detects endogenous levels of total CDH8 protein.
Protein Families:	Transmembrane

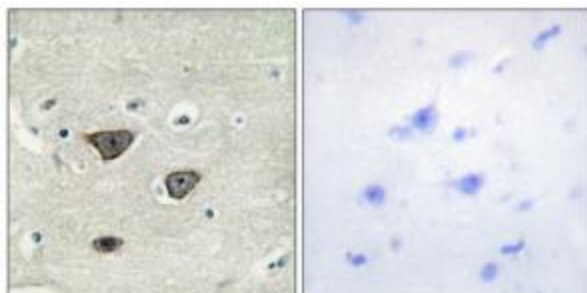


[View online »](#)

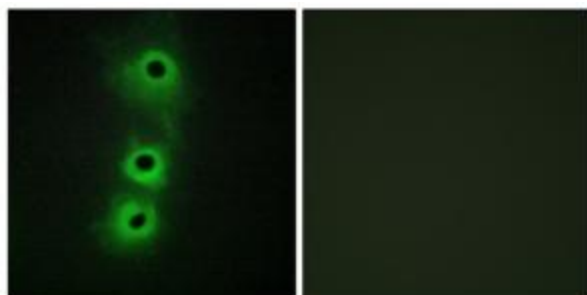
Product images:



Western blot analysis of extracts from RAW264.7 cells, using CDH8 antibody. The lane on the right is treated with the synthesized peptide.



Immunohistochemistry analysis of paraffin-embedded human brain tissue using CDH8 antibody. The picture on the right is treated with the synthesized peptide.



Immunofluorescence analysis of COS7 cells, using CDH8 antibody. The picture on the right is treated with the synthesized peptide.