

## Product datasheet for **TA311918**

### CD97 (ADGRE5) Rabbit Polyclonal Antibody

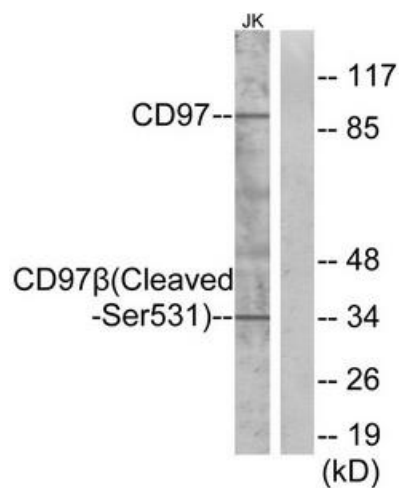
#### Product data:

Product Type:	Primary Antibodies
Applications:	WB
Recommended Dilution:	WB: 1:500~1:3000, ELISA: 1:5000
Reactivity:	Human
Host:	Rabbit
Isotype:	IgG
Clonality:	Polyclonal
Immunogen:	The antiserum was produced against synthesized peptide derived from human CD97 $\beta$ .
Formulation:	Phosphate buffered saline (without Mg <sup>2+</sup> and Ca <sup>2+</sup> ), pH 7.4, 150mM NaCl, 0.02% sodium azide and 50% glycerol.
Concentration:	lot specific
Purification:	The antibody was affinity-purified from rabbit antiserum by affinity-chromatography using epitope-specific immunogen.
Conjugation:	Unconjugated
Storage:	Store at -20°C as received.
Stability:	Stable for 12 months from date of receipt.
Gene Name:	adhesion G protein-coupled receptor E5
Database Link:	<a href="#">NP_001775</a> <a href="#">Entrez Gene 976 Human P48960</a>
Synonyms:	CD97; TM7LN1
Note:	CD97. (Cleaved-Ser531) antibody detects endogenous levels of fragment of activated CD97. resulting from cleavage adjacent to Ser531.
Protein Families:	Adult stem cells, Druggable Genome, ES Cell Differentiation/IPS, GPCR, Secreted Protein, Transmembrane



[View online »](#)

## Product images:



Western blot analysis of extracts from Jurkat cells, treated with etoposide (25uM, 24hours), using CD97 $\beta$  (Cleaved-Ser531) antibody. The lane on the right is treated with the synthesized peptide.