

## Product datasheet for TA311912

### C1S Rabbit Polyclonal Antibody

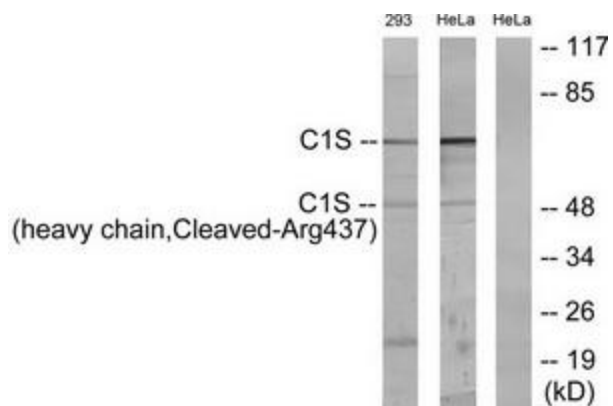
#### Product data:

Product Type:	Primary Antibodies
Applications:	WB
Recommended Dilution:	WB: 1:500~1:3000, ELISA: 1:20000
Reactivity:	Human
Host:	Rabbit
Isotype:	IgG
Clonality:	Polyclonal
Immunogen:	The antiserum was produced against synthesized peptide derived from human C1S.
Formulation:	Phosphate buffered saline (without Mg <sup>2+</sup> and Ca <sup>2+</sup> ), pH 7.4, 150mM NaCl, 0.02% sodium azide and 50% glycerol.
Concentration:	lot specific
Purification:	The antibody was affinity-purified from rabbit antiserum by affinity-chromatography using epitope-specific immunogen.
Conjugation:	Unconjugated
Storage:	Store at -20°C as received.
Stability:	Stable for 12 months from date of receipt.
Gene Name:	complement component 1, s subcomponent
Database Link:	<a href="#">NP_001725</a> <a href="#">Entrez Gene 716 Human</a> <a href="#">P09871</a>
Synonyms:	FLJ44757
Note:	C1S (heavy chain, Cleaved-Arg437) antibody detects endogenous levels of fragment of activated C1S resulting from cleavage adjacent to Arg437.
Protein Families:	Druggable Genome, Protease
Protein Pathways:	Complement and coagulation cascades, Systemic lupus erythematosus



[View online »](#)

## Product images:



Western blot analysis of extracts from 293 cells treated with etoposide (25uM, 1 hour) and HeLa cells treated with etoposide (25uM, 24 hours), using C1S (heavy chain, Cleaved-Arg437) antibody. The lane on the right is treated with the synthesized peptide.