

## Product datasheet for **TA311907**

### BMX Rabbit Polyclonal Antibody

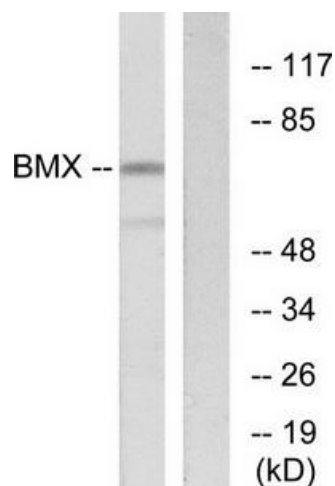
#### Product data:

Product Type:	Primary Antibodies
Applications:	IF, IHC, WB
Recommended Dilution:	WB: 1:500~1:3000, IHC: 1:50~1:100, IF: 1:100~1:500, ELISA: 1:20000
Reactivity:	Human, Mouse
Host:	Rabbit
Isotype:	IgG
Clonality:	Polyclonal
Immunogen:	The antiserum was produced against synthesized peptide derived from N-terminal of human BMX.
Formulation:	Phosphate buffered saline (without Mg <sup>2+</sup> and Ca <sup>2+</sup> ), pH 7.4, 150mM NaCl, 0.02% sodium azide and 50% glycerol.
Concentration:	lot specific
Purification:	The antibody was affinity-purified from rabbit antiserum by affinity-chromatography using epitope-specific immunogen.
Conjugation:	Unconjugated
Storage:	Store at -20°C as received.
Stability:	Stable for 12 months from date of receipt.
Gene Name:	BMX non-receptor tyrosine kinase
Database Link:	<a href="#">NP_001712</a> <a href="#">Entrez Gene 12169 Mouse</a> <a href="#">Entrez Gene 660 Human</a> <a href="#">P51813</a>
Synonyms:	ETK; PSCTK2; PSCTK3
Note:	BMX antibody detects endogenous levels of total BMX protein.
Protein Families:	Druggable Genome, Protein Kinase

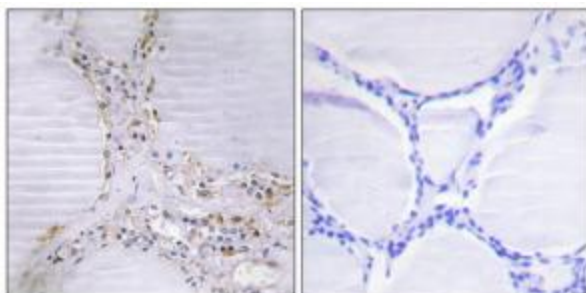


[View online »](#)

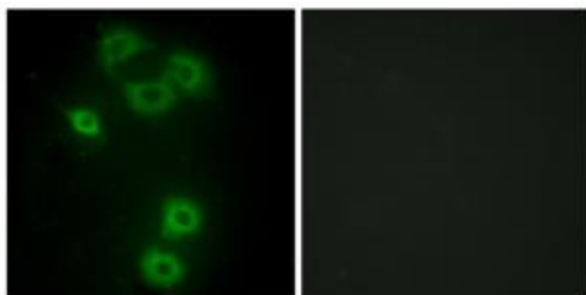
## Product images:



Western blot analysis of extracts from COS-7 cells, using BMX antibody. The lane on the right is treated with the synthesized peptide.



Immunohistochemistry analysis of paraffin-embedded human thyroid gland tissue using BMX antibody. The picture on the right is treated with the synthesized peptide.



Immunofluorescence analysis of A549 cells, using BMX antibody. The picture on the right is treated with the synthesized peptide.