

Product datasheet for **TA311906**

BMX Rabbit Polyclonal Antibody

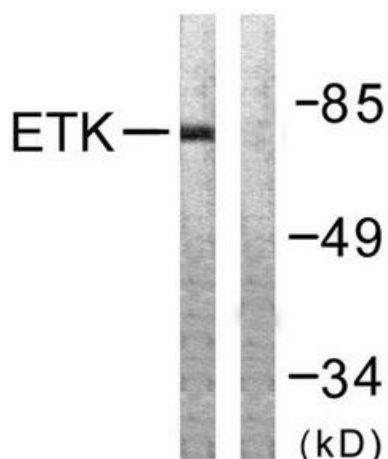
Product data:

Product Type:	Primary Antibodies
Applications:	IF, IHC, WB
Recommended Dilution:	WB: 1:500~1:3000, IHC: 1:50~1:100, IF: 1:100~1:500, ELISA: 1:10000
Reactivity:	Human, Mouse
Host:	Rabbit
Isotype:	IgG
Clonality:	Polyclonal
Immunogen:	The antiserum was produced against synthesized non-phosphopeptide derived from human ETK around the phosphorylation site of tyrosine 566 (D-Q-YP-V-S).
Formulation:	Phosphate buffered saline (without Mg ²⁺ and Ca ²⁺), pH 7.4, 150mM NaCl, 0.02% sodium azide and 50% glycerol.
Concentration:	lot specific
Purification:	The antibody was affinity-purified from rabbit antiserum by affinity-chromatography using epitope-specific immunogen.
Conjugation:	Unconjugated
Storage:	Store at -20°C as received.
Stability:	Stable for 12 months from date of receipt.
Gene Name:	BMX non-receptor tyrosine kinase
Database Link:	NP_001712 Entrez Gene 12169 Mouse Entrez Gene 660 Human P51813
Synonyms:	ETK; PSCTK2; PSCTK3
Note:	ETK (Ab-566) antibody detects endogenous levels of total ETK protein.
Protein Families:	Druggable Genome, Protein Kinase

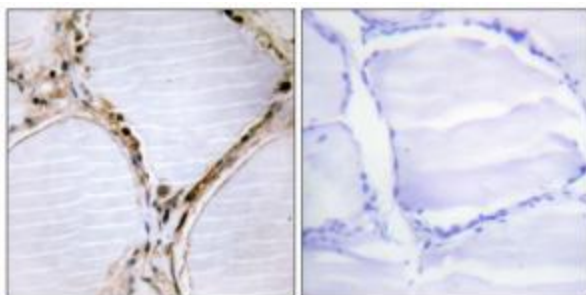


[View online »](#)

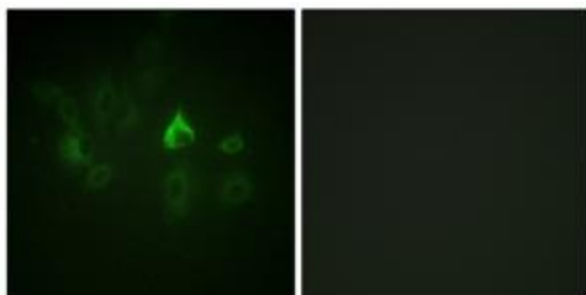
Product images:



Western blot analysis of extracts from A549 cells, using ETK (Ab-566) antibody. The lane on the right is treated with the synthesized peptide.



Immunohistochemistry analysis of paraffin-embedded human thyroid gland tissue using ETK (Ab-566) antibody. The picture on the right is treated with the synthesized peptide.



Immunofluorescence analysis of A549 cells, using ETK (Ab-566) antibody. The picture on the right is treated with the synthesized peptide.