

## Product datasheet for **TA311904**

### **bcl 6 (BCL6) Rabbit Polyclonal Antibody**

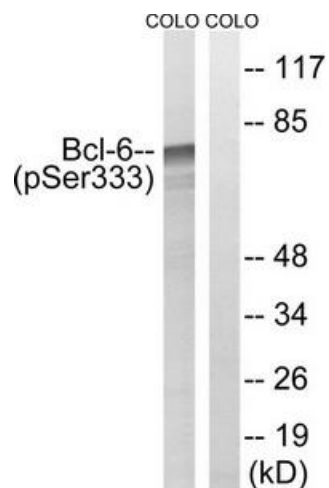
#### **Product data:**

<b>Product Type:</b>	Primary Antibodies
<b>Applications:</b>	WB
<b>Recommended Dilution:</b>	WB: 1:500~1:3000, ELISA: 1:1000
<b>Reactivity:</b>	Human, Mouse, Rat
<b>Modifications:</b>	Phospho-specific
<b>Host:</b>	Rabbit
<b>Isotype:</b>	IgG
<b>Clonality:</b>	Polyclonal
<b>Immunogen:</b>	The antiserum was produced against synthesized phosphopeptide derived from human Bcl-6 around the phosphorylation site of serine 333 (P-Q-SP-P-Q).
<b>Formulation:</b>	Phosphate buffered saline (without Mg <sup>2+</sup> and Ca <sup>2+</sup> ), pH 7.4, 150mM NaCl, 0.02% sodium azide and 50% glycerol.
<b>Concentration:</b>	lot specific
<b>Purification:</b>	The antibody was affinity-purified from rabbit antiserum by affinity-chromatography using epitope-specific immunogen.
<b>Conjugation:</b>	Unconjugated
<b>Storage:</b>	Store at -20°C as received.
<b>Stability:</b>	Stable for 12 months from date of receipt.
<b>Gene Name:</b>	B-cell CLL/lymphoma 6
<b>Database Link:</b>	<a href="#">NP_620309</a> <a href="#">Entrez Gene 12053 Mouse</a> <a href="#">Entrez Gene 303836 Rat</a> <a href="#">Entrez Gene 604 Human</a> <a href="#">P41182</a>
<b>Synonyms:</b>	BCL5; BCL6A; LAZ3; ZBTB27; ZNF51
<b>Note:</b>	Bcl-6 (Phospho-Ser333) antibody detects endogenous levels of Bcl-6 only when phosphorylated at serine 333.
<b>Protein Families:</b>	Druggable Genome, Transcription Factors



[View online »](#)

## Product images:



Western blot analysis of extracts from COLO cells, treated with insulin (0.01U/ml, 15mins), using Bcl-6 (Phospho-Ser333) antibody. The lane on the right is treated with the synthesized peptide.