

Product datasheet for **TA311902**

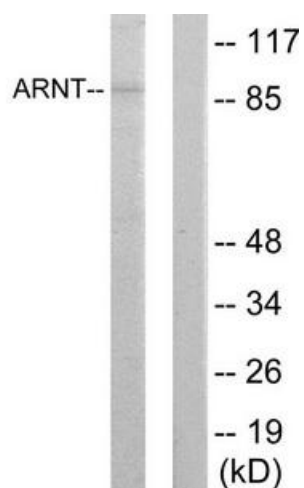
HIF1 beta (ARNT) Rabbit Polyclonal Antibody

Product data:

Product Type:	Primary Antibodies
Applications:	WB
Recommended Dilution:	WB: 1:500~1:3000, ELISA: 1:20000
Reactivity:	Human, Mouse, Rat
Host:	Rabbit
Isotype:	IgG
Clonality:	Polyclonal
Immunogen:	The antiserum was produced against synthesized peptide derived from internal of human ARNT.
Formulation:	Phosphate buffered saline (without Mg ²⁺ and Ca ²⁺), pH 7.4, 150mM NaCl, 0.02% sodium azide and 50% glycerol.
Concentration:	lot specific
Purification:	The antibody was affinity-purified from rabbit antiserum by affinity-chromatography using epitope-specific immunogen.
Conjugation:	Unconjugated
Storage:	Store at -20°C as received.
Stability:	Stable for 12 months from date of receipt.
Gene Name:	aryl hydrocarbon receptor nuclear translocator
Database Link:	NP_001659 Entrez Gene 11863 MouseEntrez Gene 25242 RatEntrez Gene 405 Human P27540
Synonyms:	bHLHe2; HIF-1-beta; HIF-1beta; HIF1-beta; HIF1B; HIF1BETA; TANGO
Note:	ARNT antibody detects endogenous levels of total ARNT protein.
Protein Families:	Druggable Genome, Transcription Factors
Protein Pathways:	Pathways in cancer, Renal cell carcinoma



[View online »](#)

Product images:

Western blot analysis of extracts from HepG2 cells, using ARNT antibody. The lane on the right is treated with the synthesized peptide.