

## Product datasheet for **TA311897**

### IRF3 Rabbit Polyclonal Antibody

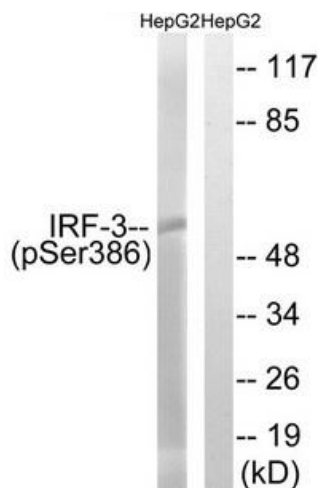
#### Product data:

Product Type:	Primary Antibodies
Applications:	WB
Recommended Dilution:	WB: 1:500~1:3000, ELISA: 1:1000
Reactivity:	Human
Modifications:	Phospho-specific
Host:	Rabbit
Isotype:	IgG
Clonality:	Polyclonal
Immunogen:	The antiserum was produced against synthesized phosphopeptide derived from human IRF-3 around the phosphorylation site of serine 386 (A-S-SP-L-E).
Formulation:	Phosphate buffered saline (without Mg <sup>2+</sup> and Ca <sup>2+</sup> ), pH 7.4, 150mM NaCl, 0.02% sodium azide and 50% glycerol.
Purification:	The antibody was affinity-purified from rabbit antiserum by affinity-chromatography using epitope-specific immunogen.
Conjugation:	Unconjugated
Storage:	Store at -20°C as received.
Stability:	Stable for 12 months from date of receipt.
Gene Name:	interferon regulatory factor 3
Database Link:	<a href="#">NP_001562</a> <a href="#">Entrez Gene 3661 Human</a> <a href="#">Q14653</a>
Synonyms:	interferon regulatory factor 3; MGC94729
Note:	IRF-3 (Phospho-Ser386) antibody detects endogenous levels of IRF-3 only when phosphorylated at serine 386.
Protein Families:	Druggable Genome, Transcription Factors
Protein Pathways:	Cytosolic DNA-sensing pathway, RIG-I-like receptor signaling pathway, Toll-like receptor signaling pathway

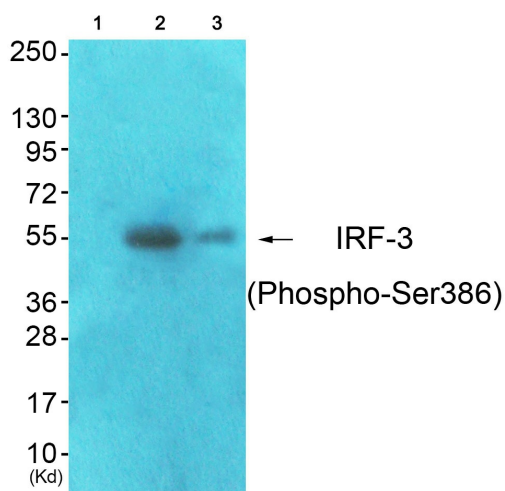


[View online »](#)

Product images:



Western blot analysis of extracts from HepG2 cells, treated with EGF (200ng/ml, 30mins), using IRF-3 (Phospho-Ser386) antibody. The lane on the right is treated with the synthesized peptide.



Western blot analysis of extracts from 293 cells (Lane 2) and colo cells (Lane 3), using IRF-3 (Phospho-Ser386) Antibody. The lane on the left is treated with synthesized peptide.