

Product datasheet for **TA311896**

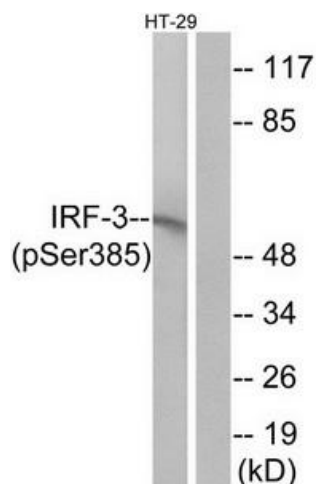
IRF3 Rabbit Polyclonal Antibody

Product data:

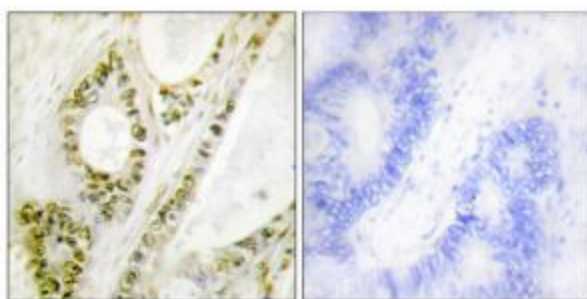
Product Type:	Primary Antibodies
Applications:	IF, IHC, WB
Recommended Dilution:	WB: 1:500~1:3000, IHC: 1:50~1:100, IF: 1:100~1:500, ELISA: 1:10000
Reactivity:	Human, Mouse, Rat
Modifications:	Phospho-specific
Host:	Rabbit
Isotype:	IgG
Clonality:	Polyclonal
Immunogen:	The antiserum was produced against synthesized phosphopeptide derived from human IRF-3 around the phosphorylation site of serine 385 (G-A-SP-S-L).
Formulation:	Phosphate buffered saline (without Mg ²⁺ and Ca ²⁺), pH 7.4, 150mM NaCl, 0.02% sodium azide and 50% glycerol.
Purification:	The antibody was affinity-purified from rabbit antiserum by affinity-chromatography using epitope-specific immunogen.
Conjugation:	Unconjugated
Storage:	Store at -20°C as received.
Stability:	Stable for 12 months from date of receipt.
Gene Name:	interferon regulatory factor 3
Database Link:	NP_001562 Entrez Gene 54131 Mouse Entrez Gene 292892 Rat Entrez Gene 3661 Human Q14653
Synonyms:	interferon regulatory factor 3; MGC94729
Note:	IRF-3 (Phospho-Ser385) antibody detects endogenous levels of IRF-3 only when phosphorylated at serine 385.
Protein Families:	Druggable Genome, Transcription Factors
Protein Pathways:	Cytosolic DNA-sensing pathway, RIG-I-like receptor signaling pathway, Toll-like receptor signaling pathway



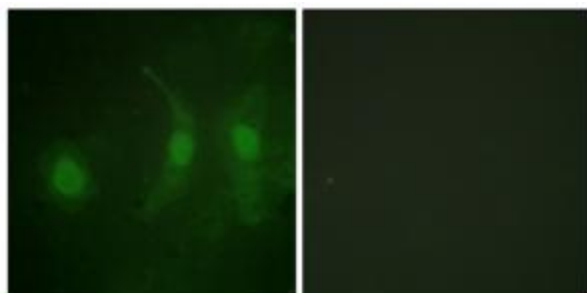
[View online »](#)

Product images:


Western blot analysis of extracts from HT-29 cells, treated with insulin (0.01U/ml, 15mins), using IRF-3 (Phospho-Ser385) antibody. The lane on the right is treated with the synthesized peptide.



Immunohistochemistry analysis of paraffin-embedded human colon carcinoma tissue using IRF-3 (Phospho-Ser385) antibody. The picture on the right is treated with the synthesized peptide.



Immunofluorescence analysis of HeLa cells, using IRF-3 (Phospho-Ser385) antibody. The picture on the right is treated with the synthesized peptide.