

Product datasheet for **TA311888**

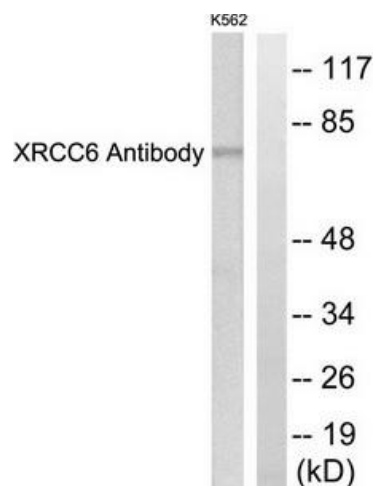
Ku70 (XRCC6) Rabbit Polyclonal Antibody

Product data:

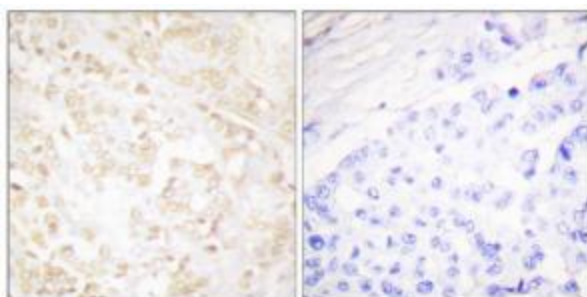
Product Type:	Primary Antibodies
Applications:	IHC, WB
Recommended Dilution:	WB: 1:500~1:3000, IHC: 1:50~1:100, ELISA: 1:5000
Reactivity:	Human, Mouse
Host:	Rabbit
Isotype:	IgG
Clonality:	Polyclonal
Immunogen:	The antiserum was produced against synthesized peptide derived from C-terminal of human XRCC6.
Formulation:	Phosphate buffered saline (without Mg ²⁺ and Ca ²⁺), pH 7.4, 150mM NaCl, 0.02% sodium azide and 50% glycerol.
Concentration:	lot specific
Purification:	The antibody was affinity-purified from rabbit antiserum by affinity-chromatography using epitope-specific immunogen.
Conjugation:	Unconjugated
Storage:	Store at -20°C as received.
Stability:	Stable for 12 months from date of receipt.
Gene Name:	X-ray repair complementing defective repair in Chinese hamster cells 6
Database Link:	NP_001460 Entrez Gene 14375 Mouse Entrez Gene 2547 Human P12956
Synonyms:	CTC75; CTCBF; G22P1; KU70; ML8; TLAA
Note:	XRCC6 antibody detects endogenous levels of total XRCC6 protein.
Protein Families:	Druggable Genome, Transcription Factors
Protein Pathways:	Non-homologous end-joining



[View online »](#)

Product images:

Western blot analysis of extracts from K562 cells, using XRCC6 antibody. The lane on the right is treated with the synthesized peptide.



Immunohistochemistry analysis of paraffin-embedded human breast carcinoma tissue using XRCC6 antibody. The picture on the right is treated with the synthesized peptide.