

Product datasheet for **TA311887**

Ku70 (XRCC6) Rabbit Polyclonal Antibody

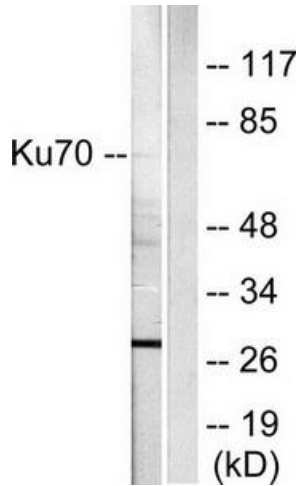
Product data:

Product Type:	Primary Antibodies
Applications:	IF, IHC, WB
Recommended Dilution:	WB: 1:500~1:3000, IHC: 1:50~1:100, IF: 1:100~1:500, ELISA: 1:10000
Reactivity:	Human
Host:	Rabbit
Isotype:	IgG
Clonality:	Polyclonal
Immunogen:	The antiserum was produced against synthesized peptide derived from human Ku70.
Formulation:	Phosphate buffered saline (without Mg ²⁺ and Ca ²⁺), pH 7.4, 150mM NaCl, 0.02% sodium azide and 50% glycerol.
Concentration:	lot specific
Purification:	The antibody was affinity-purified from rabbit antiserum by affinity-chromatography using epitope-specific immunogen.
Conjugation:	Unconjugated
Storage:	Store at -20°C as received.
Stability:	Stable for 12 months from date of receipt.
Gene Name:	X-ray repair complementing defective repair in Chinese hamster cells 6
Database Link:	NP_001460 Entrez Gene 2547 Human P12956
Synonyms:	CTC75; CTCBF; G22P1; KU70; ML8; TLAA
Note:	Ku70 antibody detects endogenous levels of total Ku70 protein.
Protein Families:	Druggable Genome, Transcription Factors
Protein Pathways:	Non-homologous end-joining

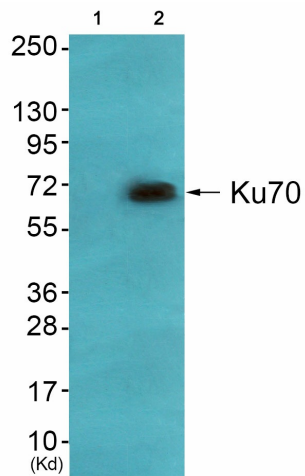


[View online »](#)

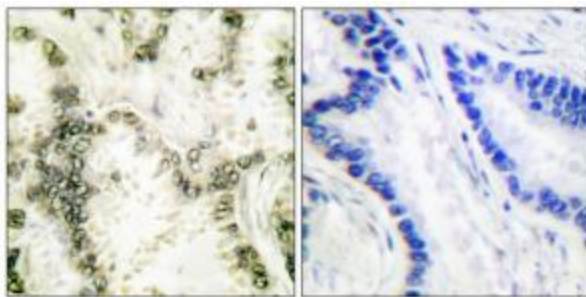
Product images:



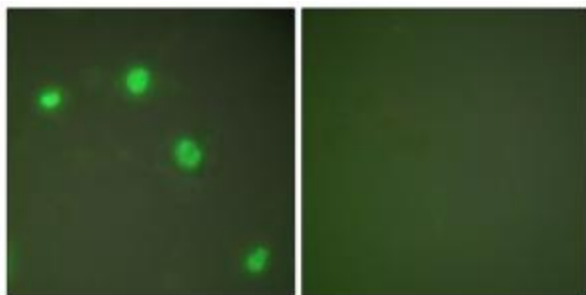
Western blot analysis of extracts from HepG2 cells, using Ku70 antibody (#TA311887). The lane on the right is treated with the synthesized peptide.



Western blot analysis of extracts from HeLa cells (Lane 2), using Ku70 Antibody. The lane on the left is treated with synthesized peptide.



Immunohistochemical analysis of paraffin-embedded human lung carcinoma tissue using Ku70 antibody (#TA311887). The picture on the right is treated with the synthesized peptide.



Immunofluorescence analysis of COS7 cells, using Ku70 antibody (#TA311887). The picture on the right is treated with the synthesized peptide.