

## Product datasheet for **TA311886**

### **Ku70 (XRCC6) Rabbit Polyclonal Antibody**

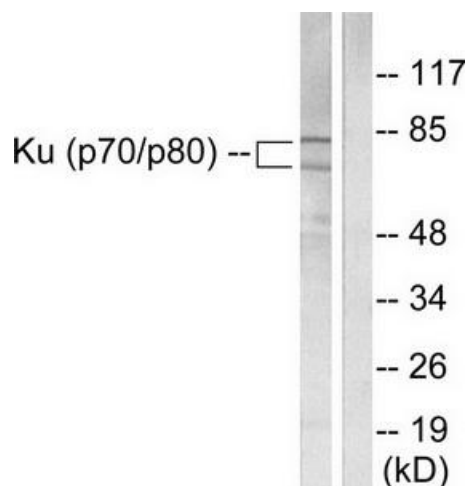
#### **Product data:**

<b>Product Type:</b>	Primary Antibodies
<b>Applications:</b>	IF, IHC, WB
<b>Recommended Dilution:</b>	WB: 1:500~1:3000, IHC: 1:50~1:100, IF: 1:100~1:500, ELISA: 1:20000
<b>Reactivity:</b>	Human, Mouse, Rat
<b>Modifications:</b>	Phospho-specific
<b>Host:</b>	Rabbit
<b>Isotype:</b>	IgG
<b>Clonality:</b>	Polyclonal
<b>Immunogen:</b>	The antiserum was produced against synthesized peptide derived from human Ku70/80.
<b>Formulation:</b>	Phosphate buffered saline (without Mg <sup>2+</sup> and Ca <sup>2+</sup> ), pH 7.4, 150mM NaCl, 0.02% sodium azide and 50% glycerol.
<b>Concentration:</b>	lot specific
<b>Purification:</b>	The antibody was affinity-purified from rabbit antiserum by affinity-chromatography using epitope-specific immunogen.
<b>Conjugation:</b>	Unconjugated
<b>Storage:</b>	Store at -20°C as received.
<b>Stability:</b>	Stable for 12 months from date of receipt.
<b>Gene Name:</b>	X-ray repair complementing defective repair in Chinese hamster cells 6
<b>Database Link:</b>	<a href="#">NP_001460</a> <a href="#">Entrez Gene 14375 Mouse</a> <a href="#">Entrez Gene 25019 Rat</a> <a href="#">Entrez Gene 2547 Human</a> <a href="#">P12956</a>
<b>Synonyms:</b>	CTC75; CTCBF; G22P1; KU70; ML8; TLAA
<b>Note:</b>	Ku70/80 antibody detects endogenous levels of total Ku70/80 protein.
<b>Protein Families:</b>	Druggable Genome, Transcription Factors
<b>Protein Pathways:</b>	Non-homologous end-joining

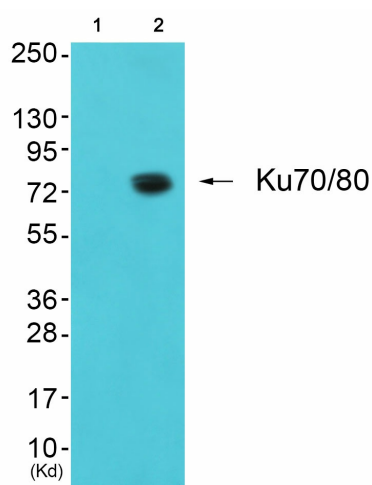


[View online »](#)

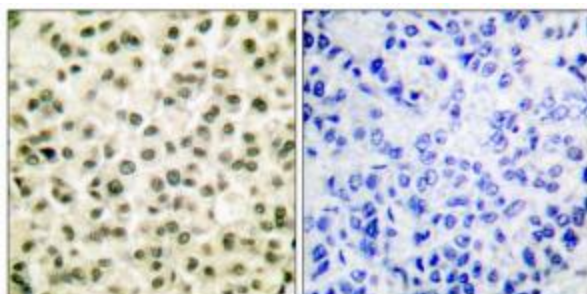
**Product images:**



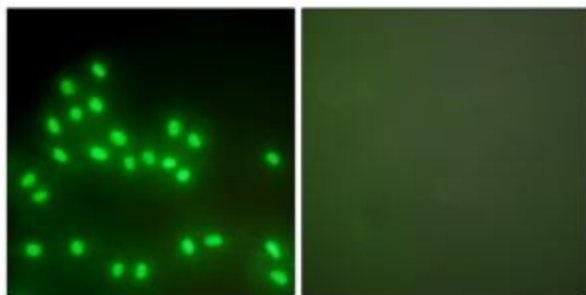
Western blot analysis of extracts from LOVO cells, using Ku70/80 antibody (#TA311886).The lane on the right is treated with the synthesized peptide.



Western blot analysis of extracts from JK cells (Lane 2), using Ku80 Antibody. The lane on the left is treated with synthesized peptide.



Immunohistochemical analysis of paraffin-embedded human breast carcinoma tissue using Ku70/80 antibody (#TA311886).The picture on the right is treated with the synthesized peptide.



Immunofluorescence analysis of A549 cells, using Ku70/80 antibody (#TA311886). The picture on the right is treated with the synthesized peptide.