

Product datasheet for **TA311881**

Ephrin A2 (EFNA2) Rabbit Polyclonal Antibody

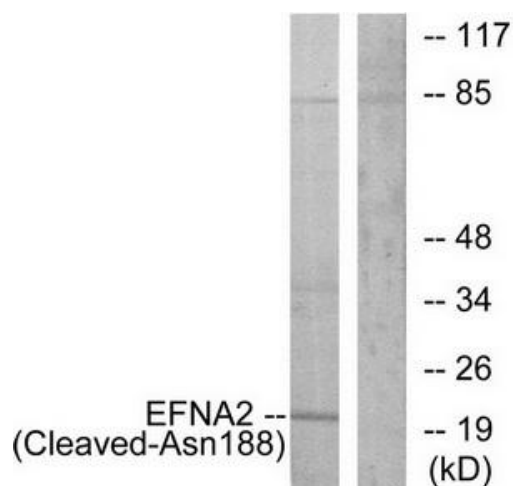
Product data:

Product Type:	Primary Antibodies
Applications:	WB
Recommended Dilution:	WB: 1:500~1:3000, ELISA: 1:20000
Reactivity:	Human, Mouse
Modifications:	Phospho-specific
Host:	Rabbit
Isotype:	IgG
Clonality:	Polyclonal
Immunogen:	The antiserum was produced against synthesized peptide derived from human EFNA2.
Formulation:	Phosphate buffered saline (without Mg ²⁺ and Ca ²⁺), pH 7.4, 150mM NaCl, 0.02% sodium azide and 50% glycerol.
Concentration:	lot specific
Purification:	The antibody was affinity-purified from rabbit antiserum by affinity-chromatography using epitope-specific immunogen.
Conjugation:	Unconjugated
Storage:	Store at -20°C as received.
Stability:	Stable for 12 months from date of receipt.
Gene Name:	ephrin A2
Database Link:	NP_001396 Entrez Gene 13637 Mouse Entrez Gene 1943 Human O43921
Synonyms:	ELF-1; EPLG6; HEK7-L; LERK-6; LERK6
Note:	EFNA2 (Cleaved-Asn188) antibody detects endogenous levels of fragment of activated EFNA2 resulting from cleavage adjacent to Asn188.
Protein Families:	Druggable Genome
Protein Pathways:	Axon guidance



[View online »](#)

Product images:



Western blot analysis of extracts from 293 cells, treated with etoposide (25uM, 1 hour), using EFNA2 (Cleaved-Asn188) antibody. The lane on the right is treated with the synthesized peptide.