

Product datasheet for **TA311880**

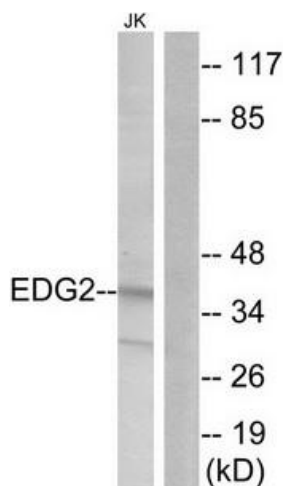
EDG2 (LPAR1) Rabbit Polyclonal Antibody

Product data:

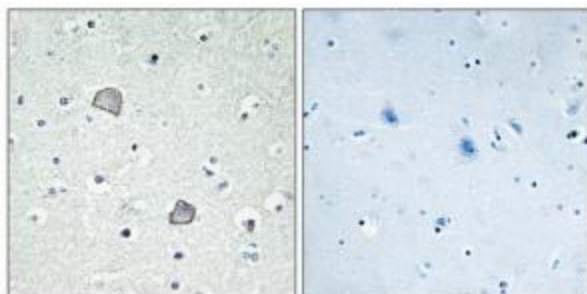
Product Type:	Primary Antibodies
Applications:	IF, IHC, WB
Recommended Dilution:	WB: 1:500~1:3000, IHC: 1:50~1:100, IF: 1:100~1:500, ELISA: 1:1000
Reactivity:	Human, Rat
Modifications:	Phospho-specific
Host:	Rabbit
Isotype:	IgG
Clonality:	Polyclonal
Immunogen:	The antiserum was produced against synthesized peptide derived from internal of human EDG2.
Formulation:	Phosphate buffered saline (without Mg ²⁺ and Ca ²⁺), pH 7.4, 150mM NaCl, 0.02% sodium azide and 50% glycerol.
Concentration:	lot specific
Purification:	The antibody was affinity-purified from rabbit antiserum by affinity-chromatography using epitope-specific immunogen.
Conjugation:	Unconjugated
Storage:	Store at -20°C as received.
Stability:	Stable for 12 months from date of receipt.
Gene Name:	lysophosphatidic acid receptor 1
Database Link:	NP_001392 Entrez Gene 116744 Rat Entrez Gene 1902 Human Q92633
Synonyms:	edg-2; EDG2; Gpcr26; GPR26; LPA1; Mrec1.3; rec.1.3; vzg-1; VZG1
Note:	EDG2 antibody detects endogenous levels of total EDG2 protein.
Protein Families:	Druggable Genome, GPCR, Transmembrane
Protein Pathways:	Gap junction, Neuroactive ligand-receptor interaction



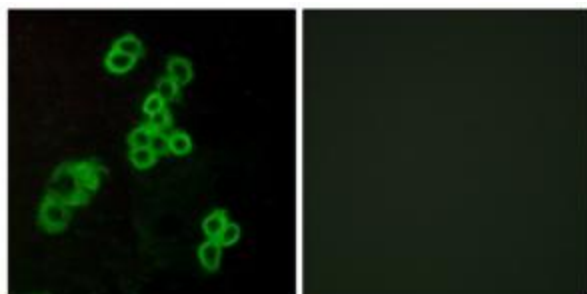
[View online »](#)

Product images:


Western blot analysis of extracts from Jurkat cells, using EDG2 antibody. The lane on the right is treated with the synthesized peptide.



Immunohistochemistry analysis of paraffin-embedded human brain tissue using EDG2 antibody. The picture on the right is treated with the synthesized peptide.



Immunofluorescence analysis of MCF-7 cells, using EDG2 antibody. The picture on the right is treated with the synthesized peptide.