

Product datasheet for **TA311878**

EDG1 (S1PR1) Rabbit Polyclonal Antibody

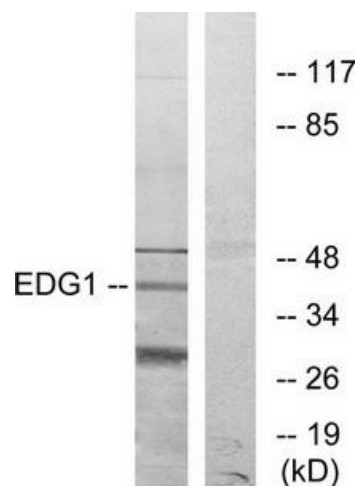
Product data:

| | |
|-----------------------|--|
| Product Type: | Primary Antibodies |
| Applications: | IF, WB |
| Recommended Dilution: | WB: 1:500~1:3000, IF: 1:100~1:500, ELISA: 1:1000 |
| Reactivity: | Human |
| Modifications: | Phospho-specific |
| Host: | Rabbit |
| Isotype: | IgG |
| Clonality: | Polyclonal |
| Immunogen: | The antiserum was produced against synthesized peptide derived from internal of human EDG1. |
| Formulation: | Phosphate buffered saline (without Mg ²⁺ and Ca ²⁺), pH 7.4, 150mM NaCl, 0.02% sodium azide and 50% glycerol. |
| Purification: | The antibody was affinity-purified from rabbit antiserum by affinity-chromatography using epitope-specific immunogen. |
| Conjugation: | Unconjugated |
| Storage: | Store at -20°C as received. |
| Stability: | Stable for 12 months from date of receipt. |
| Gene Name: | sphingosine-1-phosphate receptor 1 |
| Database Link: | NP_001391 Entrez Gene 1901 Human P21453 |
| Synonyms: | CD363; CHEDG1; D1S3362; ECGF1; EDG-1; EDG1; S1P1 |
| Note: | EDG1 antibody detects endogenous levels of total EDG1 protein. |
| Protein Families: | Druggable Genome, GPCR, Transmembrane |
| Protein Pathways: | Neuroactive ligand-receptor interaction |

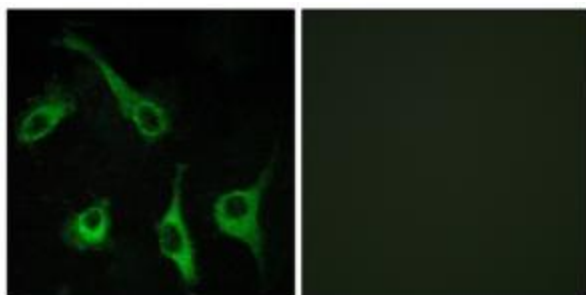


[View online »](#)

Product images:



Western blot analysis of extracts from COLO205 cells, using EDG1 antibody. The lane on the right is treated with the synthesized peptide.



Immunofluorescence analysis of COS-7 cells, using EDG1 antibody. The picture on the right is treated with the synthesized peptide.