

## Product datasheet for **TA311872**

### IKK alpha (CHUK) Rabbit Polyclonal Antibody

#### Product data:

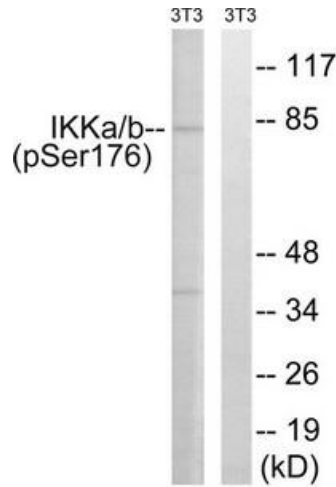
Product Type:	Primary Antibodies
Applications:	IHC, WB
Recommended Dilution:	WB: 1:500~1:3000, IHC: 1:50~1:100, ELISA: 1:1000
Reactivity:	Human, Mouse, Rat
Modifications:	Phospho-specific
Host:	Rabbit
Isotype:	IgG
Clonality:	Polyclonal
Immunogen:	The antiserum was produced against synthesized phosphopeptide derived from human IKK- $\alpha$ around the phosphorylation site of serine 176/177 (Q-G-SP-L-C).
Formulation:	Phosphate buffered saline (without Mg <sup>2+</sup> and Ca <sup>2+</sup> ), pH 7.4, 150mM NaCl, 0.02% sodium azide and 50% glycerol.
Concentration:	lot specific
Purification:	The antibody was affinity-purified from rabbit antiserum by affinity-chromatography using epitope-specific immunogen.
Conjugation:	Unconjugated
Storage:	Store at -20°C as received.
Stability:	Stable for 12 months from date of receipt.
Gene Name:	conserved helix-loop-helix ubiquitous kinase
Database Link:	<a href="#">NP_001269</a> <a href="#">Entrez Gene 12675 Mouse</a> <a href="#">Entrez Gene 309361 Rat</a> <a href="#">Entrez Gene 1147 Human</a> <a href="#">O15111</a>
Synonyms:	IKBKA; IKK-alpha; IKK1; IKKA; NFKBIKA; TCF16
Note:	IKK-. (Phospho-Ser176)/IKK-. (Phospho-Ser177) antibody detects endogenous levels of IKK-. only when phosphorylated at serine 176/177.
Protein Families:	Druggable Genome, Protein Kinase



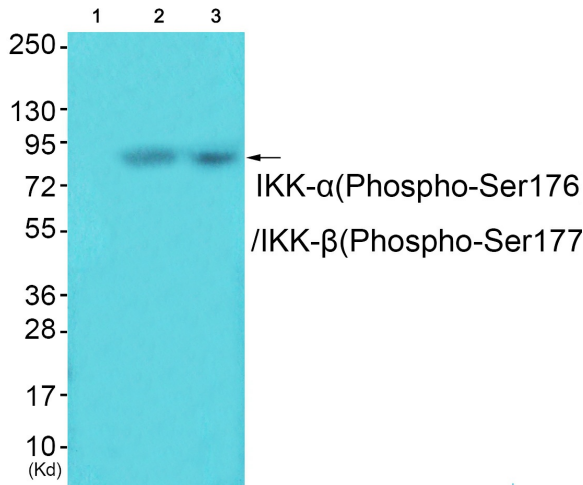
[View online »](#)

**Protein Pathways:**

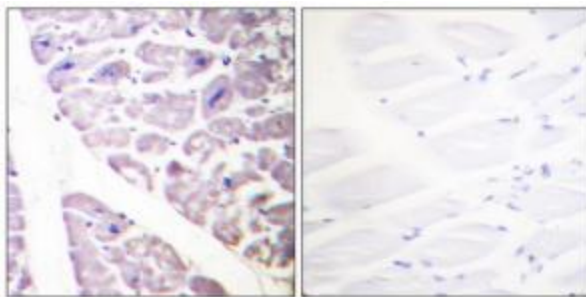
Acute myeloid leukemia, Adipocytokine signaling pathway, Apoptosis, B cell receptor signaling pathway, Chemokine signaling pathway, Chronic myeloid leukemia, Cytosolic DNA-sensing pathway, Epithelial cell signaling in Helicobacter pylori infection, MAPK signaling pathway, NOD-like receptor signaling pathway, Pancreatic cancer, Pathways in cancer, Prostate cancer, RIG-I-like receptor signaling pathway, Small cell lung cancer, T cell receptor signaling pathway, Toll-like receptor signaling pathway

**Product images:**


Western blot analysis of extracts from 3T3 cells, treated with TNF (20ng/ml, 30mins), using IKK-a (Phospho-Ser176)/IKK- $\beta$  (Phospho-Ser177) antibody. The lane on the right is treated with the synthesized peptide.



Western blot analysis of extracts from A549 cells (Lane 2) and 3T3 cells (Lane 3), using IKK-a (Phospho-Ser176) /IKK- $\beta$  (Phospho-Ser177) Antibody. The lane on the left is treated with synthesized peptide.



Immunohistochemistry analysis of paraffin-embedded human skeletal muscle tissue using IKK- $\alpha$  (Phospho-Ser176)/IKK- $\beta$  (Phospho-Ser177) antibody. The picture on the right is treated with the synthesized peptide.